

WORK BARGE K9127

Multipurpose lifting solution

The K9127 is a flattop work barge with a large open deck space that is perfectly suitable for carrying heavy loads and is surrounded with a bin wall that allows for the secured stacking of materials. Installed on the barge is a strong 4 point mooring system for safe and secure mooring capabilities. With its shallow draft it can easily operate in near coastal waters and with its stable seagoing behavior it can also perfectly be deployed in further offshore operating area's as well.

The K9127 features the ability to fill gas and oxygen bottles used for cutting operations since it's outfitted with an oxygen factory and gas bottle filling station.

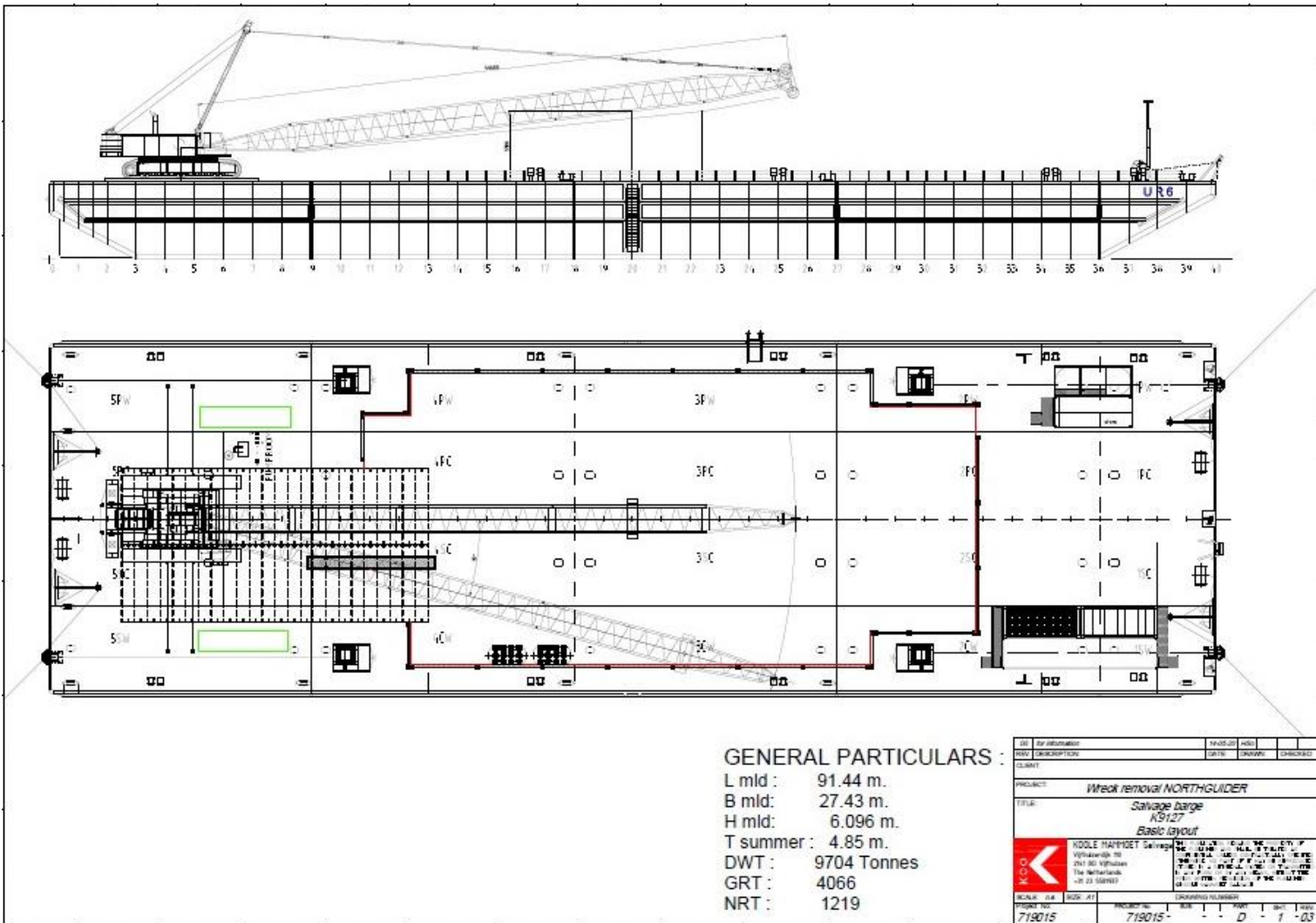
The K9127 is currently equipped with a HS8200 HD crawler crane however, it can also be equipped with a HS8300 HD crawler crane depending on heavy lifting requirements of the project.

BARGE K9127

Length overall	91,4 [m]
Breadth	27,44 [m]
Depth	6.00 [m]
Draft	0.85 [m]
Dwt	9.704 [t]

DECK EQUIPMENT

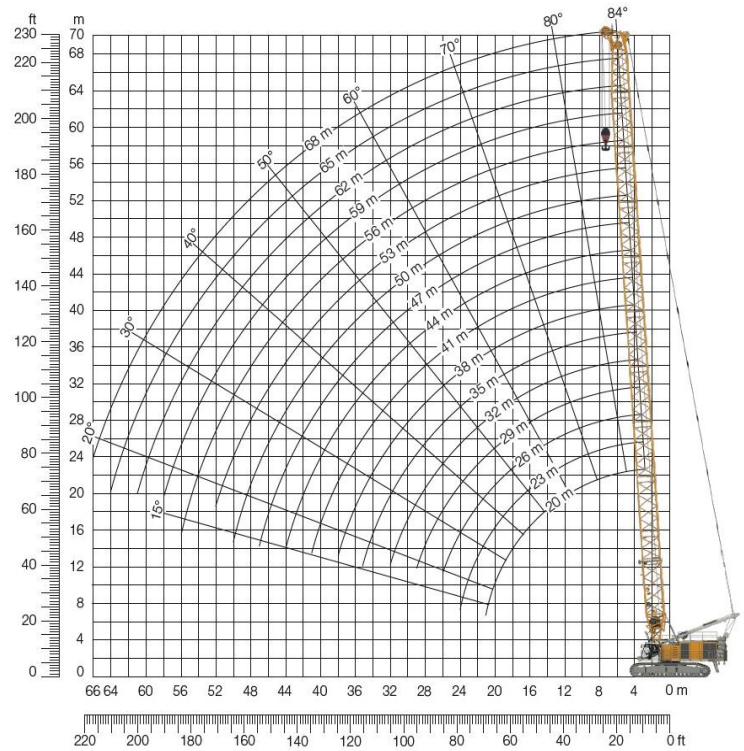
4 point mooring system
 5 winches of each 40 [t]
 5t delta flipper anchors
 Day time accommodation
 Fuel storage on board +
 generator 230/240v



CRANE LIEBHERR HS8200 HD

Crawler crane

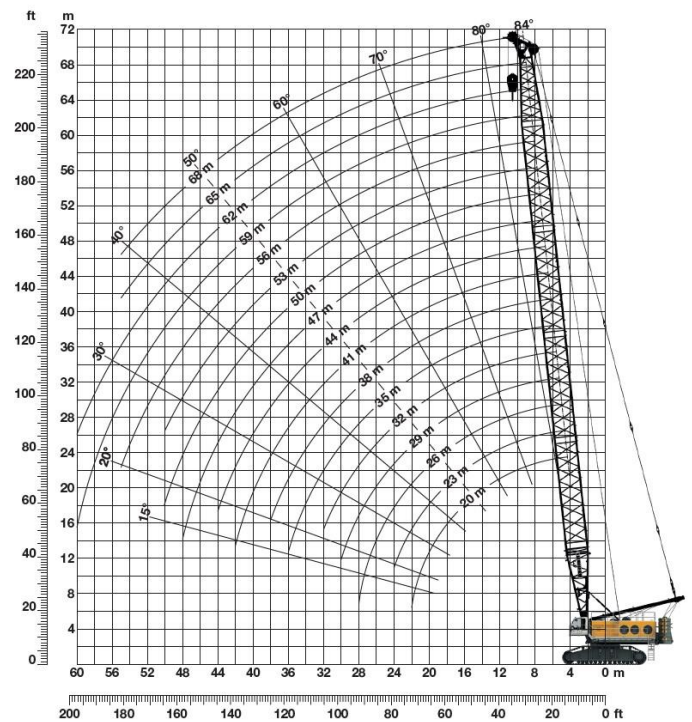
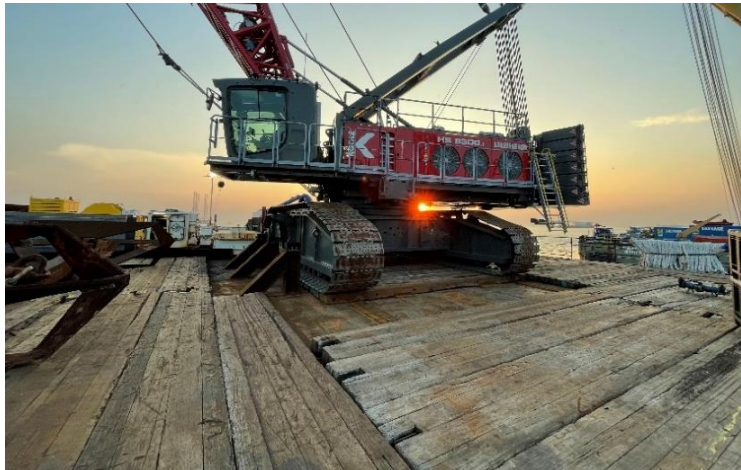
Maximum lifting capacity	200t
Minimum boom length	20.00 m
Maximum boom length	68.00 m



CRANE HS8300 HD

Crawler crane

Maximum lifting capacity	300t
Minimum boom length	20.00 m
Maximum boom length	84.20 m



**WORK BARGE K9127
WITH 200 OR 300 TONS
CRAWLER CRANE**
Multipurpose lifting solution

KMS bv

Vijfhuizerdijk 110
2141 BD Vijfhuizen
The Netherlands
+31 (0)23 558 19 37
info@koole.eu
www.koole.eu