



WORK BARGE K10031 WITH 200 OR 300 CRAWLER CRANE

Multipurpose lifting solution

The "K10031" is a versatile offshore accommodation solution which has unique characteristics. Built to the highest quality and safety standards it offers flexibility of accommodation configuration, 8-point mooring system of 100 tons winches and a large open deck space capable of a multitude of uses to support the offshore oil and gas or renewable energy industries as well as more general marine support operation in the salvation, removal and refloating of sunken vessels or barges.

The K10031 currently has accommodation for 120 POB in well-appointed en-suite rooms and is complete with office, galley, mess, medical and recreational facilities, to provide an ideal living and working environment.

BARGE K10031

Flag & Port of registry	Barbados
IMO no. & Call sign	8525111 & 8PBE2
Classification	American Bureau of Shipping (ABS)
Year build	2007, modified 2010/11
Length overall	100,60 [m]
Breadth	30,48 [m]
Depth	6,09 [m]
Max draft	3,82 [m]
Deck strength	15 [ts/m ³]
Free deck area	1.100 [m ²]
GT / NT	4.953 [t] / 1.485 [t]

DECK EQUIPMENT

8 point mooring system

4 waterfall winches of each 100 [t]

Equipped with 1.000 [m] x 58 [mm] wire

8x 7 tons delta flipper anchors

120 persons accommodation

State of the art galley, mess room, change room, sanitary, gym, medics and offices.

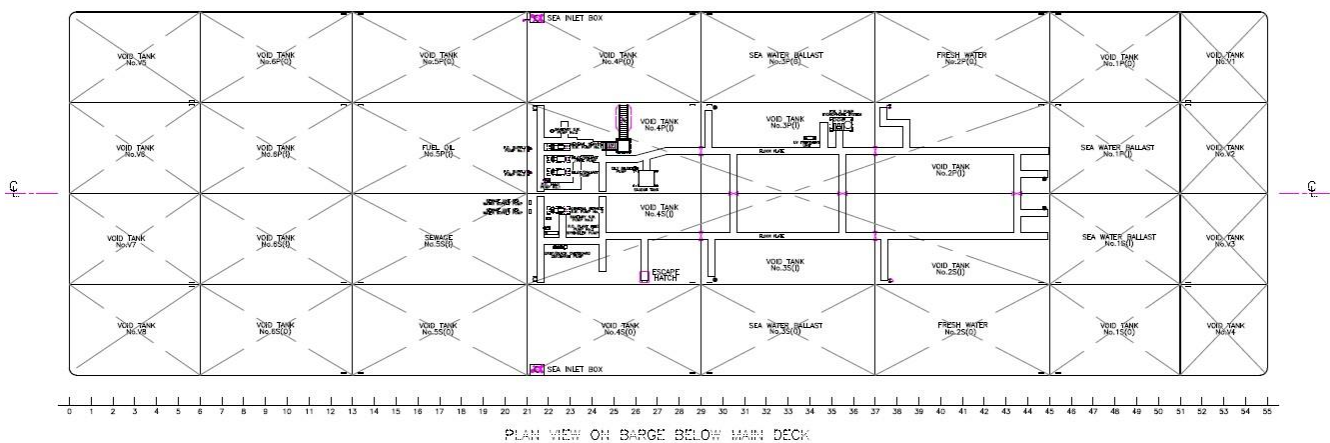
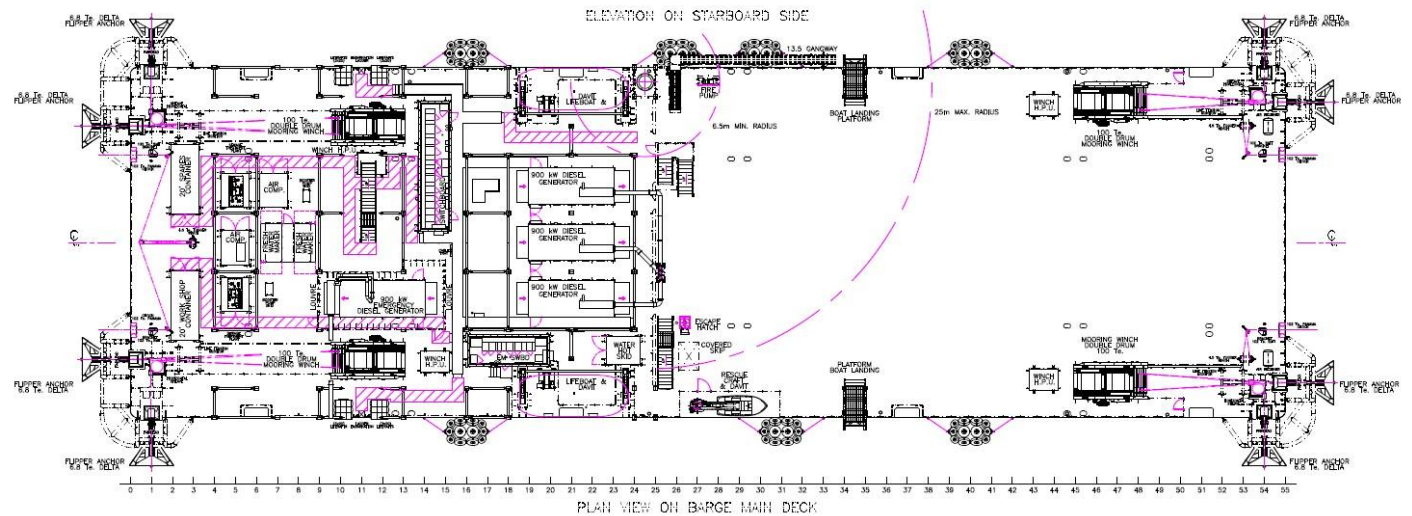
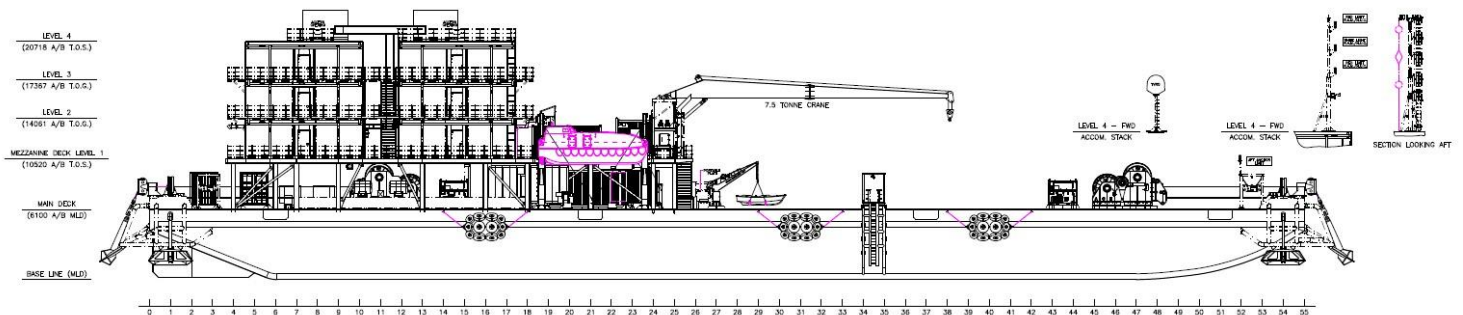
3x 900kW at 440V/60Hz 3ph generators

Emergency generator 1x 900kW

600m³ Fuel oil storage

600m³ Fresh water storage

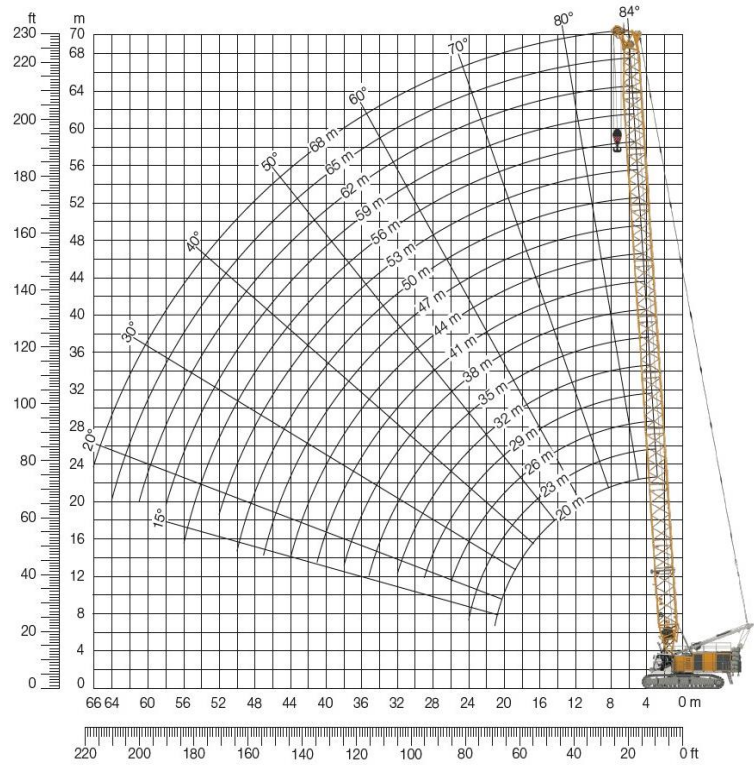
Service crane 7,5 (ts) @ 25 (mtr)



CRANE LIEBHERR HS 8200 HD

Crawler crane

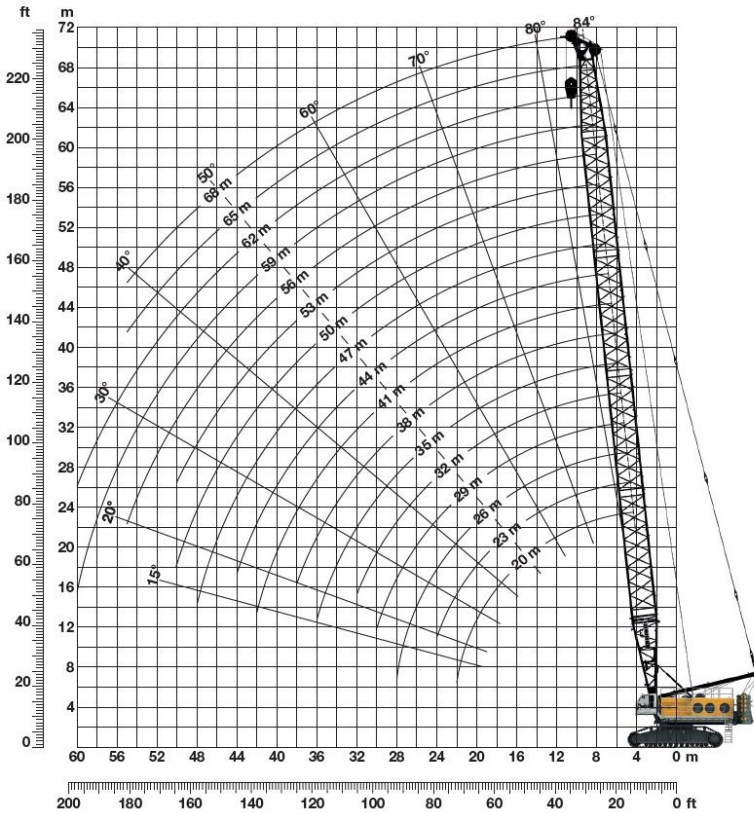
Maximum lifting capacity	200t
Minimum boom length	20.00 m
Maximum boom length	68.00 m



CRANE LIEBHERR HS 8300 HD

Crawler crane

Maximum lifting capacity	300t
Minimum boom lenght	31.00 m
Maximum boom length	84.20 m



WORK BARGE K10031 WITH 200 OR 300 TON CRAWLER CRANE

Multipurpose lifting solution

KMS bv

Vijfhuizerdijk 110
2141 BD Vijfhuizen
The Netherlands
+31 (0)23 558 19 37
info@koole.eu
www.koole.eu