



## **WORK BARGE H-283**

*Multipurpose lifting solution*

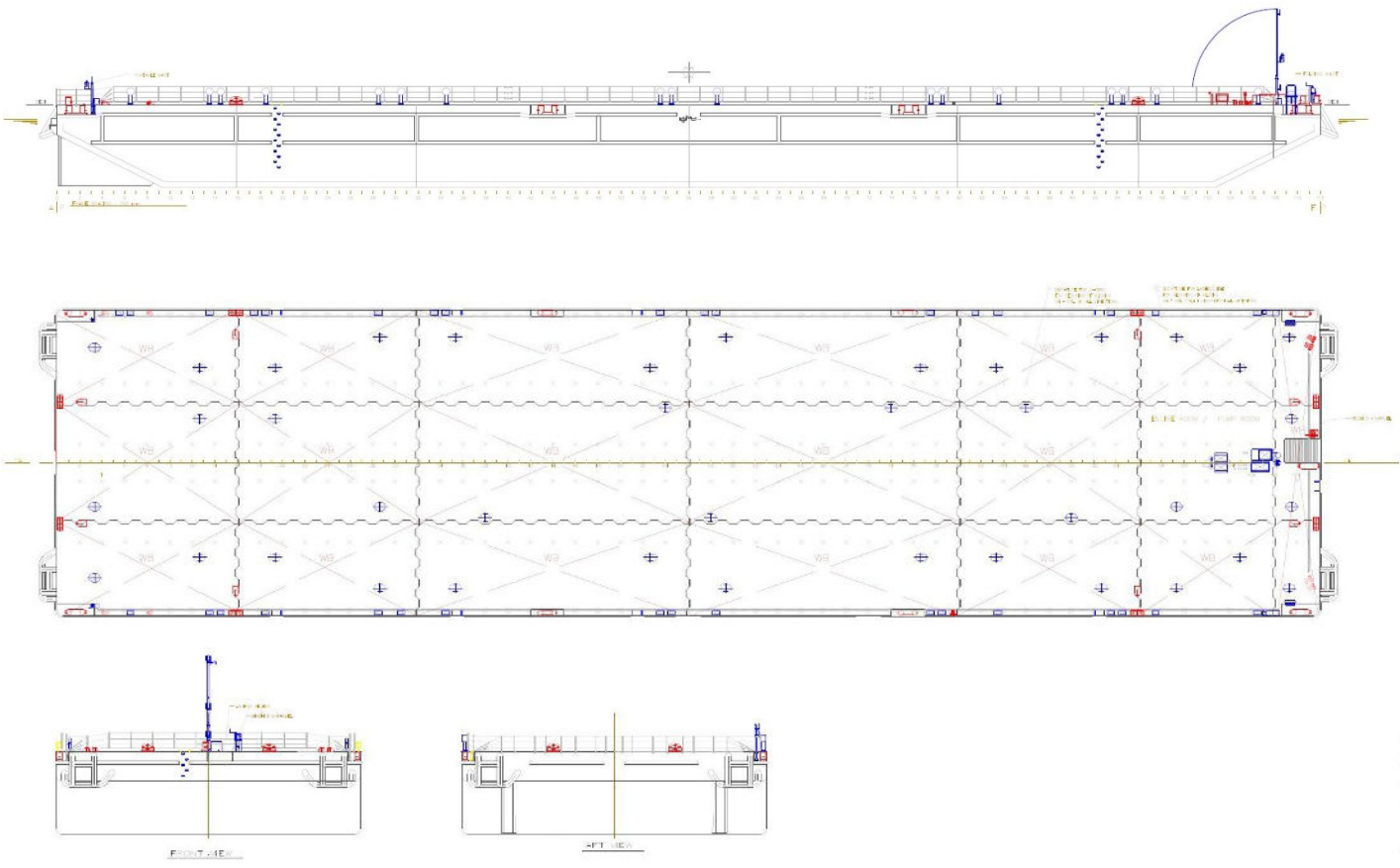
The H-283 is a flattop work barge with a large open deck space that is perfectly suitable for carrying heavy loads and an environmental containment wall surrounds the barge for containment purposes. The H-283 features the ability to fill gas and oxygen bottles used for cutting operations since it's outfitted with an oxygen factory and gas bottle filling station.

With its shallow draft it can easily operate in near coastal waters and with its stable seagoing behavior it can also perfectly be deployed in further offshore operating area's as well. Installed on the barge is a strong 4 point mooring system for safe and secure mooring capabilities.

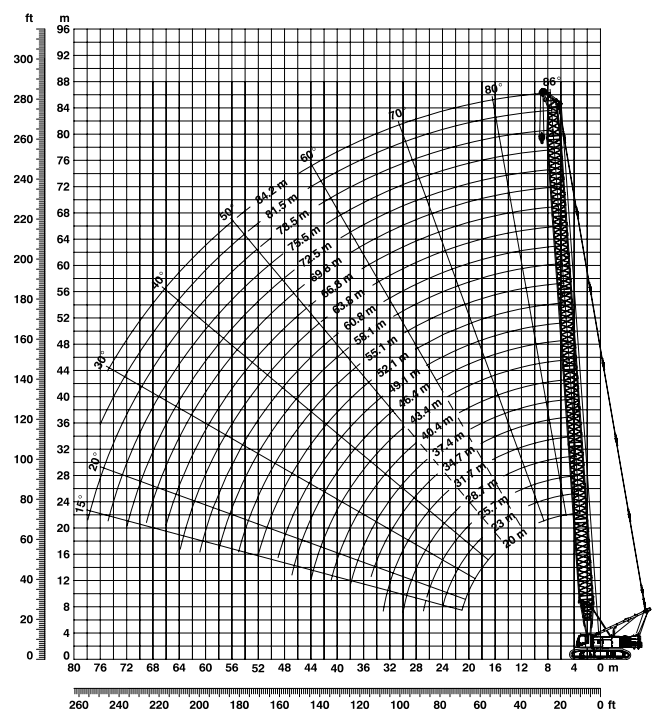
The H-283 is currently equipped with a HS895 HD crawler crane however, it can also be equipped with a HS8200 HD or HS8300 HD crawler crane depending on heavy lifting requirements of the project.

BARGE H-283	IMO9316831
Length overall	84.00 [m]
Breadth	20,30 [m]
Breadth overall	21.30 [m]
Depth	5.50 [m]
Draft	2.00 [m]
Dwt	5.364 [t]
GT / NT	2.473/741

- DECK EQUIPMENT**
- Barge fitted for ballasting, equipped with pump rooms
  - 4 point mooring system
  - 4 winches of each 40 [t]
  - 5t delta flipper anchors
  - Daytime accommodation
  - Fuel storage on board + generator 230/400v



CRANE LIEBHERR HS 895 HD	
Crawler crane	
Maximum lifting capacity	200t
Minimum boom length	20.00 m
Maximum boom length	84.20 m



# KEY SPECIFICATIONS OF OUR BARGES

NAME OF VESSEL	LENGHT	BREADTH	DECK STRENGHT	POB	FREE DECK SPACE	REGION
K9127	91,4 m	27,44 m	25 [t/m3]	5	968 m2	World wide
K9128	91,44 m	27,44 m	15 [t/m3]	12	1440 m2	Mediterranean sea
K10030	100,584 m	30,480 m	15 [t/m3]	12	1830 m2	Middle East
K10031	100,60 m <sup>2</sup>	30,48 m	15 [t/m3]	120	1349 m2	Europe



**WORK BARGE H-283  
WITH 200 OR 300 TON  
CRAWLER CRANE**  
*Multipurpose lifting solution*

**KMS bv**

Vijfhuizerdijk 110  
2141 BD Vijfhuizen  
The Netherlands  
+31 (0)23 558 19 37  
info@koole.eu  
www.koole.eu