



AHTS KOOLE 42

The KOOLE 42 is an anchor handling tug supply vessel (AHTS). With its excellent seakeeping behavior and her maneuverability, the KOOLE 42 has outstanding towing characteristics. The KOOLE 42 has a bollard pull of 45 tons, classed by Bureau Veritas as an unrestricted sailing area. The KOOLE 42 is manned with an experienced crew, equipped with large variety of equipment, in combination with the extreme large bunker capacity of 390.000 liters, very economic engines, seaworthiness hull, and the twin fixed propellers in nozzles, gives the vessel maximum reach while towing and an excellent seakeeping behavior. With its multi-purpose design and outstanding towing characteristics, the KOOLE 42 can be used for worldwide operations such as, but not limited to, single and double towing, anchor handling, anchor recovery, rig move assistance, salvage assistance, wreck removal, harbor towage, escorting and deck and/or cargo transportation. The KOOLE 42 is equipped with a towing- and anchor handling winch, deck crane and Shark jaws, Towing pins.

Accommodation on board is provided for 13 persons.

GENERAL

Name	KOOLE 42
Type of vessel	Anchor Handling Tug Supply / Utility Vessel
Class	Bureau Veritas I ✕ I HULL ✕ MACH MULTI PURPOSE AHT Unrestr. Nav.
Flag	Gibraltar
Port of Registry	Gibraltar
Year Built	2007
Callsign	ZDIW8
IMO Number	9481037
MMSI	236491000

DIMENSIONS

Length Overall	42,00 meter
Breadth Overall	11,00 meter
Depth at Sides	4,90 meter
Minimum Draft	3,50 meter
Operating Draft	3,50 meter
Maximum Draft	4,15 meter
Minimum Airdraft	18,00 meter
Maximum Airdraft	18,00 meter
Gross Tonnage	499 GT
Net Tonnage	149 NT
Clear deck area	160 + 2x 20 m ²
Cargo capacity	9x 1 TEU
Cargo deck load	5,0 tons per m ²

TANK CAPACITY

Fuel Oil	390,00 m ³
Fresh Water	78,00 m ³
Lube Oil	1,042 m ³
Hydraulic Oil	1,042 m ³
Dirty Oil	3,086 m ³
Sewage	9,940 m ³
Fuel Oil Transfer Pump	60 m ³ /h
Fresh Water Transfer Pump	30 m ³ /h

NAUTICAL AND COMMUNICATION EQUIPMENT

Sea areas	A1+A2+A3
Radar system	JRC JMA-5310-6 / FURUNO 1510 Mark3
SSB	NSR NHR-1500 MF/HF
Chart system	Wartsila Transis Navi Sailor - Navi Plannr 4000
Autopilot	Alphatron / Alphaseapilot MFC
Inmarsat C	Furuno Felcom 18 + LRIT / Sailor 6006 + LRIT
Echo sounder	Furuno FE 700
GPS	Furuno GP-150
AIS	Furuno FA-150
Gyro Compass	Alphatron Alphaminicourse V2
Navtex	NSR marine NVX-3000
CCTV System	Furuno DS-80
V-Sat	Intellian

PERFORMANCES

Bollard Pull	45,0 tons
Maximum Speed	12,6 knots
Economic Speed	9,00 knots

PROPULSION SYSTEM

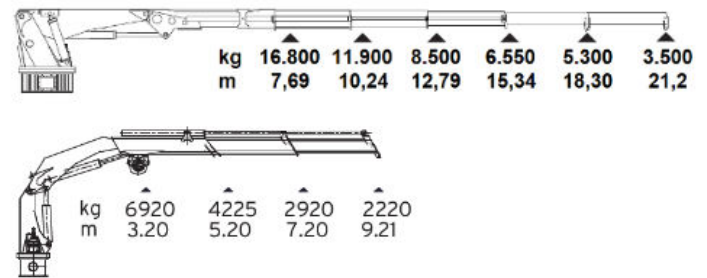
Main Engines	2x Caterpillar 3512B
Total Power	2.238 kW = 3.043 BHP
Gearboxes	Twin Disc Marine Transmissions MG-5506 1/6
Propulsion	Twin fixed propellers in nozzles
Propellor Diameter	2,3 meter, Van Voorden Kaplan
Bowthruster	140 kW

AUXILIARY EQUIPMENT

Generator sets	2x Caterpillar 3406C
Capacity	2x 215 kW / 400 Volt
Hydraulic set	2 Electrical motor x 90 kW
Fresh Water Maker	3,0 m ³ / 5,5 m ³ (24hrs)
Gasoil separator	WESTFALIA 1,5 m ³ /hr

DECK CRANE

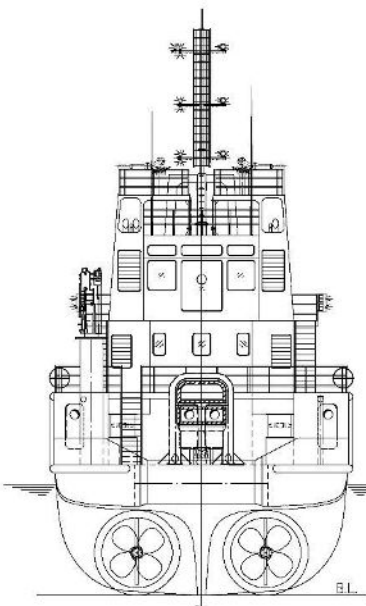
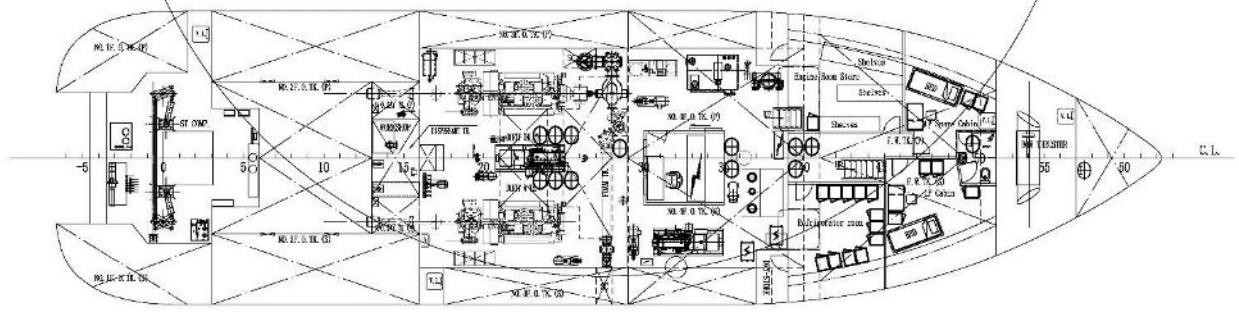
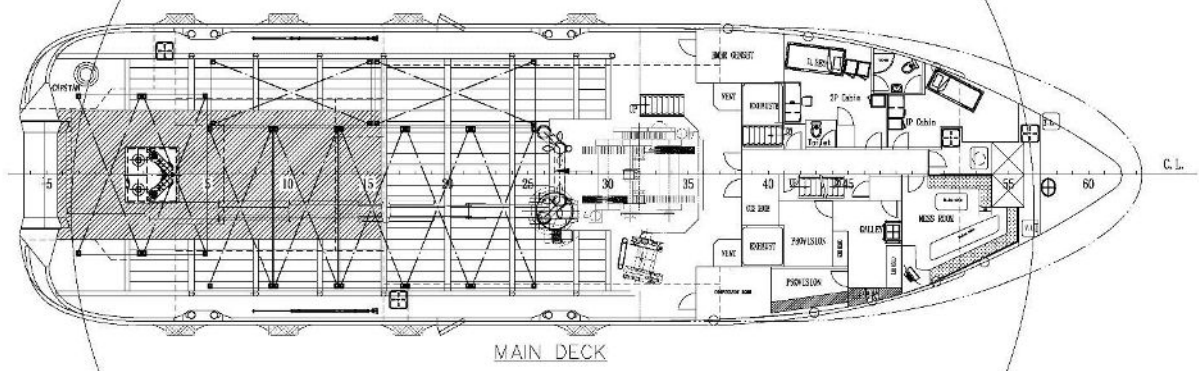
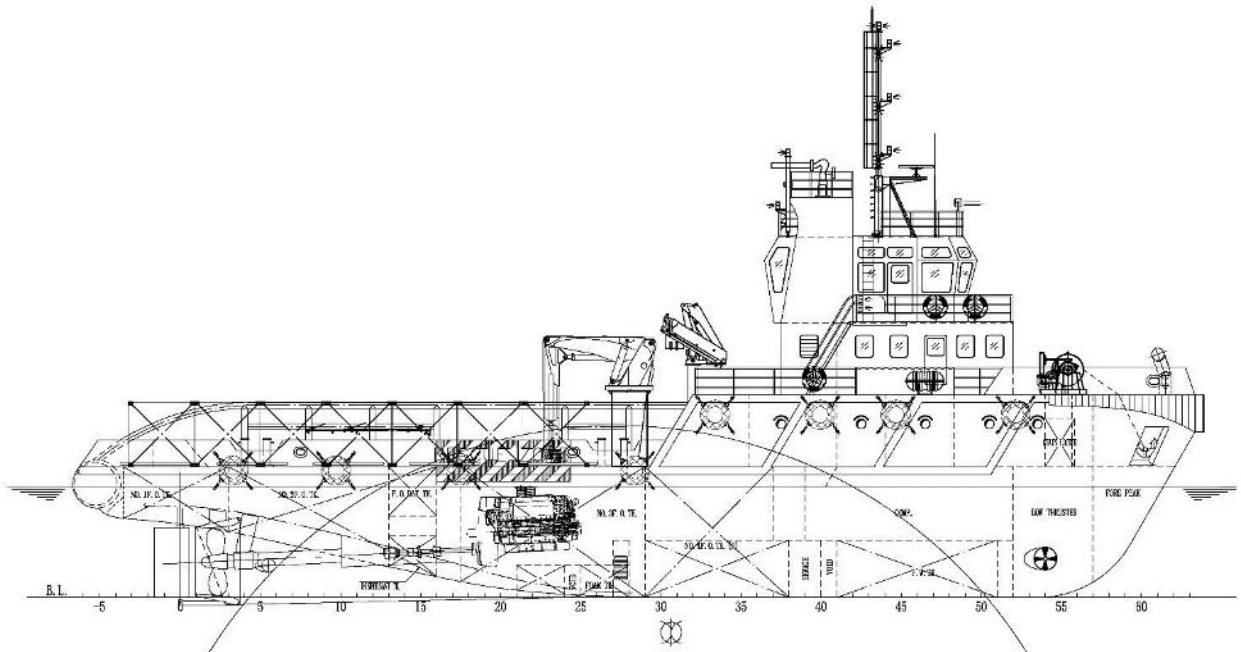
Type Heila	HEILA HLRM 140-4SL+1PM
Capacity	5,3 tons @ 18,3 meters / 3,5 tons @ 21,2 mtr
Auxiliary marine crane	Promac AK 30 E2 / 2,2 ton @ 9,2 meters

**DECK EQUIPMENT**

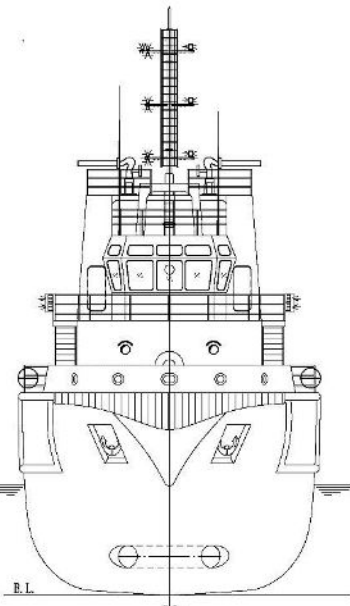
Winch	ME Double Drum Waterfall
Towing Drum	Pull Force 65T / Holding F. 100T
Anchor Handling Drum	Pull Force 65T / Holding F. 100T
Main Towing Wire	800 meters x 52 mm
2nd Towing Wire	600 meters x 52 mm
Anchorhandling Work Wire	80 meters x 32 mm
Tugger Winch	5 tons
Towing Pins	Towing pins/Shark yaws/Wire catcher SWL 200t
Pushbow	Not applicable
Stern Roller	SWL 200 T
Firefighting monitors	Not applicable

ACCOMMODATION

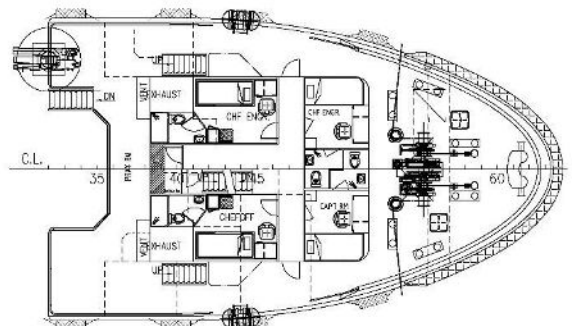
Persons	13
Single Cabin	5
Double Cabin	4
Air Conditioned	Yes



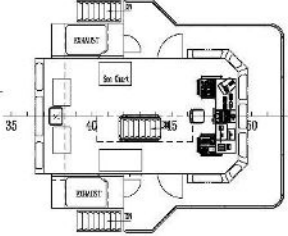
VIEW FROM AFT



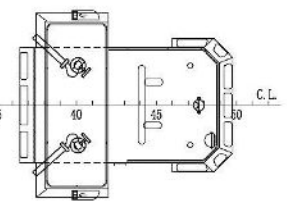
VIEW FROM BOW



FORECASTLE DECK



WHEELHOUSE DECK



COMPASS DECK

KEY SPECIFICATIONS OF OUR TUG FLEET

NAME OF THE VESSEL	LENGTH	BREADTH	DEPTH	CLEAR DECK AREA	CARGO DECK LOAD	BOLLARD	TOTAL POWER
KOOLE 31	30,80 meter	11,00 meter	4,20 meter	96,0 m ²	6,0 tons per m ²	72,3 tons	4.476 kW
KOOLE 32	31,10 meter	9,50 meter	3,10 meter	108,0 m ²	15,0 tons per m ²	50,0 tons	2.340 kW
KOOLE 53	52,80 meter	13,20 meter	5,20 meter	275,0 m ²	7,0 tons per m ²	50,0 tons	3.200 kW



AHTS KOOLE 42

KMS bv

Vijfhuizerdijk 110
2141 BD Vijfhuizen
The Netherlands
+31 (0)23 558 19 37
info@koole.eu
www.koole.eu