



## AHTS KOOLE 32

The KOOLE 32 is an anchor handling tug supply vessel (AHTS). With its excellent seakeeping behavior and her maneuverability, the KOOLE 32 has outstanding towing characteristics. The KOOLE 32 has a bollard pull of 50 tons, classed by Bureau Veritas with an unrestricted sailing area. The KOOLE 32 is manned with an experienced crew, equipped with high quality gear. With its multi-purpose design and outstanding towing characteristics, the KOOLE 32 can be used for worldwide operations such as, but not limited to, single and double towing, pushing, anchor handling, anchor recovery, rig move assistance, salvage assistance, wreck removal, harbor towage, escorting and deck and/or cargo transportation. The KOOLE 32 is equipped with a towing- and anchor handling winch, strong deck crane, hydraulic operated rollers in aft deck + guide rollers on sides for pushing and Karmoy fork/towing pins.

Accommodation on board is provided for 8 persons.

**GENERAL**

Name	KOOLE 32
Type of vessel	Anchor Handling Tug / Utility Vessel
Class	Bureau Veritas I $\times$ HULL $\times$ MACH Tug Unrestricted Navigation • AUT-UMS
Flag	Dutch
Port of Registry	Rotterdam
Year Built	2010
Callsign	PBZP
IMO Number	9547881
MMSI	246376000

**DIMENSIONS**

Length Overall	31,10 meter
Breadth Overall	9,50 meter
Depth at Sides	3,10 meter
Minimum Draft	2,80 meter
Operating Draft	2,80 meter
Maximum Draft	3,10 meter
Minimum Airdraft	9,50 meter
Maximum Airdraft	16,00 meter
Gross Tonnage	254 GT
Net Tonnage	76 NT
Clear deck area	108,0 m <sup>2</sup>
Cargo capacity	2x 1 TEU
Cargo deck load	15,0 tons per m <sup>2</sup>

**TANK CAPACITY**

Fuel Oil	105,0 m <sup>3</sup>
Fresh Water	31,0 m <sup>3</sup>
FiFi foam tanks	N/A
Lube Oil	2,650 m <sup>3</sup>
Hydraulic Oil	1,000 m <sup>3</sup>
Dirty Oil	2,650 m <sup>3</sup>
Sewage	12,720 m <sup>3</sup>
Fuel Oil Transfer Pump	35 m <sup>3</sup> /h
Fresh Water Transfer Pump	35 m <sup>3</sup> /h

**NAUTICAL AND COMMUNICATION EQUIPMENT**

Sea areas	A1+A2+A3
Radar system	1x JRC JMA 5210-6 and 1x JRC JMA-609-7m
GMDSS	Thrane & Thrane Sailor RT5022
Chart system	ECDIS Transas chart Alpha
Autopilot	Alpha Sea Pilot MF & Alpha River Pilot MF
Inmarsat C	2x Thrane & Thrane Sailor TT3000E
Echo sounder	JRC JFE 380/200
GPS	2x JRC – NWZ 4570/DGPS
AIS	JRC JHS-82
Gyro Compass	Alphatron Alpha Mini Course
Navtex	JRC NCR 333
CCTV System	Alphatron
V-Sat	V80G Intellian

**PERFORMANCES**

Bollard Pull	50,0 tons
Maximum Speed	12,5 knots
Economic Speed	8,50 knots

**PROPULSION SYSTEM**

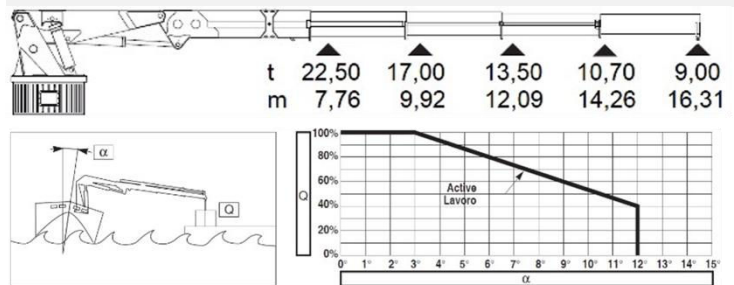
Main Engines	2x Mitsubishi S16R-MPTA
Total Power	2.340 kW = 3.182 BHP
Gearboxes	2x Reintjes type WAF763
Propulsion	2x fixed props in short nozzles
Propellor Diameter	2,10 meter, Van Voorden
Rudders	4x Fishtail rudders (2x2) separate operated
Bowthruster	340 BHP, hydraulic driven

**AUXILIARY EQUIPMENT**

Generator sets	2x Mitsubishi 6D 16 T
Capacity	2x 120 kVa
Hydraulic set	1x Mitsubishi S6A3 MPTK 600hp
Fresh Water Maker	3.500 ltr/24h (HEM)
Gasoil separator	2x Alfa laval 5.000 ltr/24 hr (Alfa Laval)

**DECK CRANE**

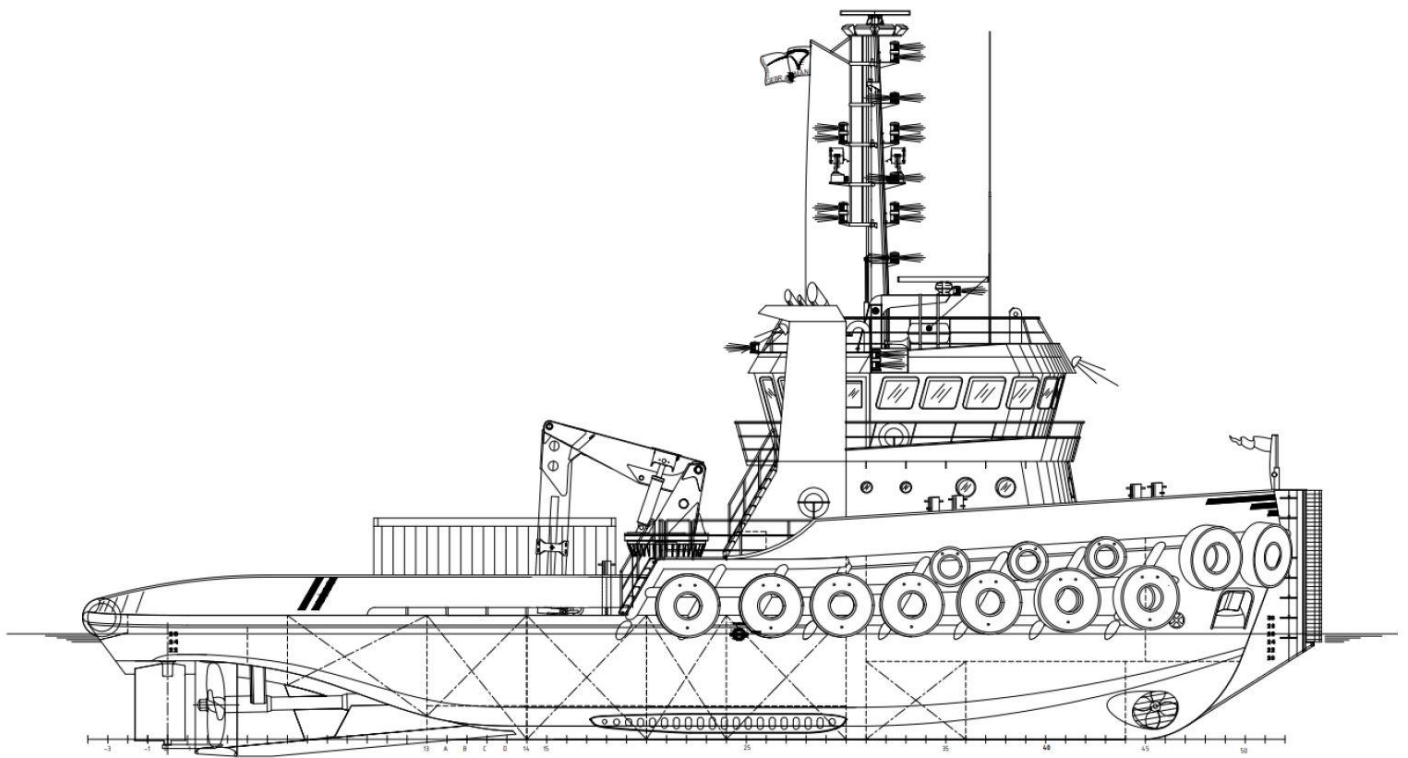
Type	HEILA HLRM 200-4SL
Capacity	9,0 tons at 16,31 meters
Auxiliary marine crane	David crane for survey equipment in moonpool

**DECK EQUIPMENT**

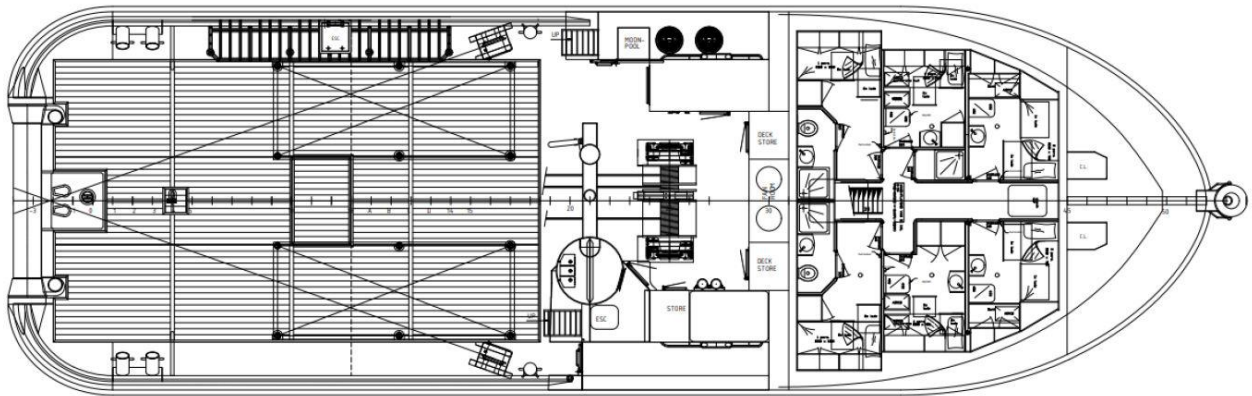
Winch	Maaskant Double Drum Towing and AH winch
Towing Drum	Pull Force 50T / Holding F. 80T
Anchor Handling Drum	Pull Force 50T / Holding F. 80T
Main Towing Wire	700 meters x 42 mm
2nd Towing Wire	350 meters x 42 mm
Pushing system	Hydraulic rollers in deck/guide rollers on sides
Tugger Winch	2x 8,5 tons, 40mtr x 18mm wire
Towing Pins	Karmoy fork and Towingpins SWL 130 t
Pushbow	Rubber fender 1x 900 mm dia.
Stern Roller	4.840 mm x dia 700 mm
Moonpool	700mm x 700mm + David crane. PS mid-ships

**ACCOMMODATION**

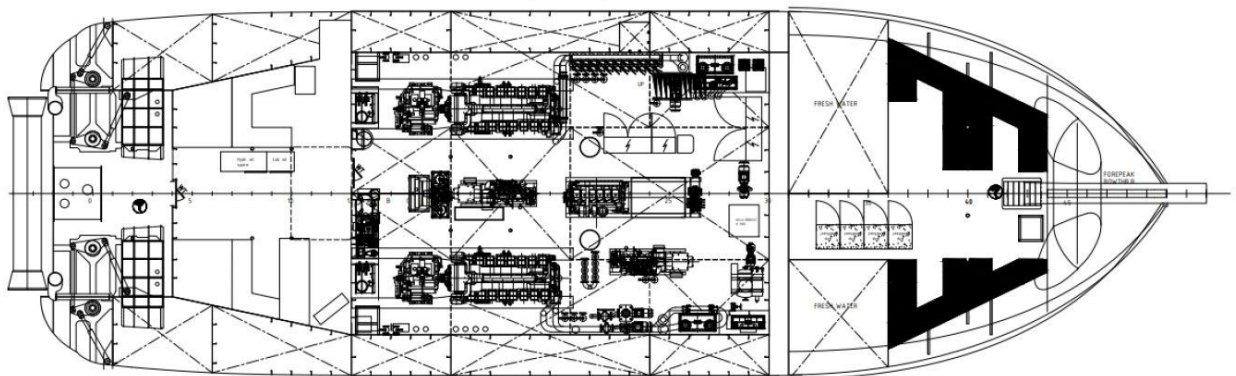
Persons	8
Single Cabin	4
Double Cabin	2
Air Conditioned	Yes



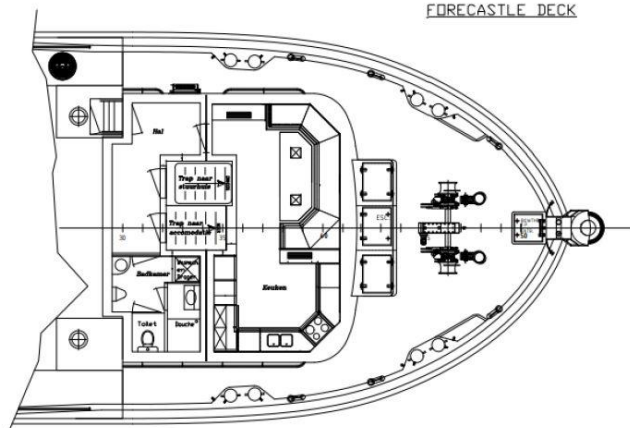
MAIN DECK/TWEEN DECK



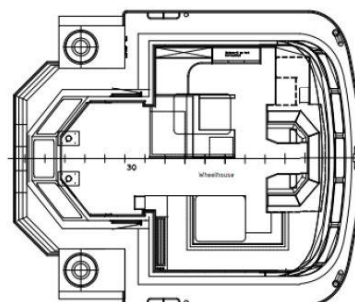
TANKTOP



FORECASTLE DECK



BRIDGE DECK



## KEY SPECIFICATIONS OF OUR TUG FLEET

NAME OF THE VESSEL	LENGTH	BREADTH	DEPTH	CLEAR DECK AREA	CARGO DECK LOAD	BOLLARD	TOTAL POWER
KOOLE 31	30,80 meter	11,00 meter	4,20 meter	96,0 m <sup>2</sup>	6,0 tons per m <sup>2</sup>	72,3 tons	4.476 kW
KOOLE 42	31,10 meter	9,50 meter	3,10 meter	108,0 m <sup>2</sup>	15,0 tons per m <sup>2</sup>	50,0 tons	2.340 kW
KOOLE 53	52,80 meter	13,20 meter	5,20 meter	275,0 m <sup>2</sup>	7,0 tons per m <sup>2</sup>	50,0 tons	3.200 kW



# AHTS KOOLE 32

**KMS bv**

Vijfhuizerdijk 110  
2141 BD Vijfhuizen  
The Netherlands  
+31 (0)23 558 19 37  
info@koole.eu  
www.koole.eu