

## AHTS KOOLE 31

The KOOLE 31 (former Viking) is an anchor handling tug supply vessel (AHTS). With its excellent seakeeping behavior and her maneuverability the KOOLE 31 has outstanding towing characteristics. The KOOLE 31 has a bollard pull of 72,3 tonnes and classed by Bureau Veritas with an unrestricted sailing area. The KOOLE 31 is manned with an experienced crew, equipped with high quality gear. With its multi-purpose design and outstanding towing characteristics, the KOOLE 31 can be used for worldwide operations such as, but not limited to, single and double towing, pushing, anchor handling, anchor recovery, rig move assistance, salvage assistance, wreck removal, harbor towage, escorting and deck and/or cargo transportation. The KOOLE 31 is equipped with a towing- and anchor handling winch, deck crane and Karmoy towing pins.

Accommodation on board is provided for 8 persons.

GENERAL	
Name	KOOLE 31
Type of vessel	Anchor Handling Tug Supply / Utility Vessel
Class	Bureau Veritas I <del>✗</del> HULL <del>✗</del> MACH AUT-UMS Tug - Mon-shaft, Unrestr. Nav.
Flag	Dutch
Port of Registry	Amsterdam
Year Built	2008 - Kooiman Zwijndrecht, The Netherlands
Callsign	PIHD
IMO Number	9431903
MMSI	245039000

DIMENSIONS	
Length Overall	30,80 meter
Breadth Overall	10,50 meter
Depth at Sides	4,20 meter
Minimum Draft	3,45 meter
Operating Draft	3,45 meter
Maximum Draft	3,65 meter
Minimum Airdraft	11,25 meter
Maximum Airdraft	22,80 meter
Gross Tonnage	332 GT
Net Tonnage	99 NT
Clear deck area	96,0 m <sup>2</sup>
Cargo capacity	2x 1 TEU
Cargo deck load	6,0 tons per m <sup>2</sup>

TANK CAPACITY	
Fuel Oil	220,00 m <sup>3</sup>
Fresh Water	18,00 m <sup>3</sup>
FiFi foam tanks	N/A
Lube Oil	3,60 m <sup>3</sup>
Hydraulic Oil	5,00 m <sup>3</sup>
Dirty Oil	3,60 m <sup>3</sup>
Sewage	9,90 m <sup>3</sup>
Fuel Oil Transfer Pump	50 m <sup>3</sup> /h
Fresh Water Transfer Pump	50 m <sup>3</sup> /h

NAUTICAL AND COMMUNICATION EQUIPMENT	
Sea areas	A1+A2+A3
Radar system	2 x Furuno 2117 with Arpa
SSB	Furuno FS 2570 250 watt pep
Chart system	ECDIS Transas Navisailor 2x Furuno type FEA
Autopilot	RZ Seapilot 75
Inmarsat C	2x Furuno Felcom 15
Echo sounder	Furuno FE 700
GPS	2 x Furuno GP 150
AIS	Furuno FA 150
Gyro Compass	Simrad GC80
Navtex	Furuno NX 700 + 701
Dopplerlog	Furuno DS 80
V-Sat	KNS KA-160

PERFORMANCES	
Bollard Pull	72,3 tons
Maximum Speed	13,5 knots
Economic Speed	9,00 knots

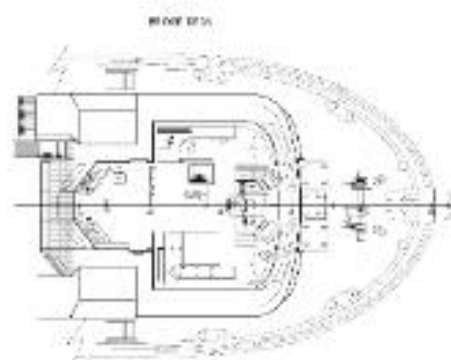
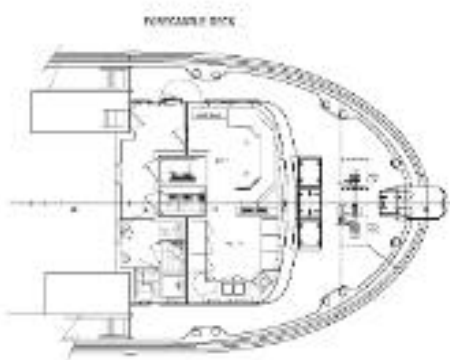
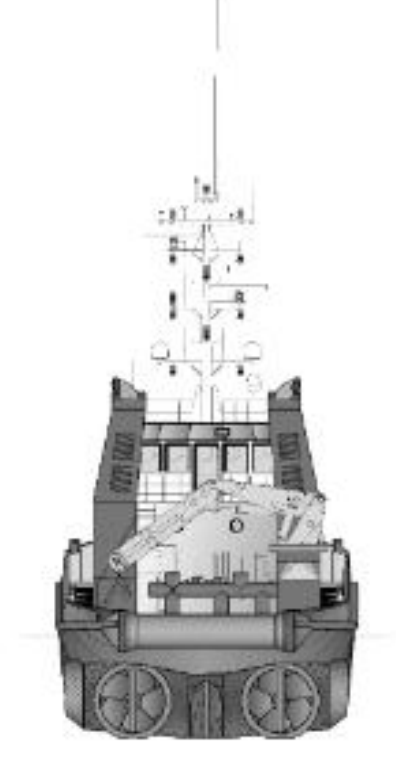
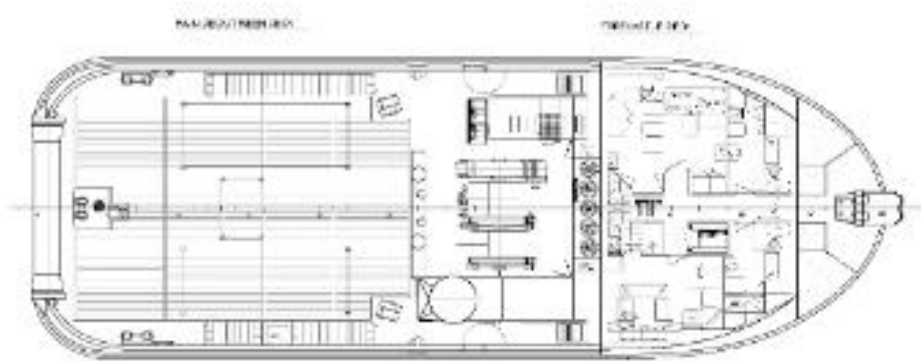
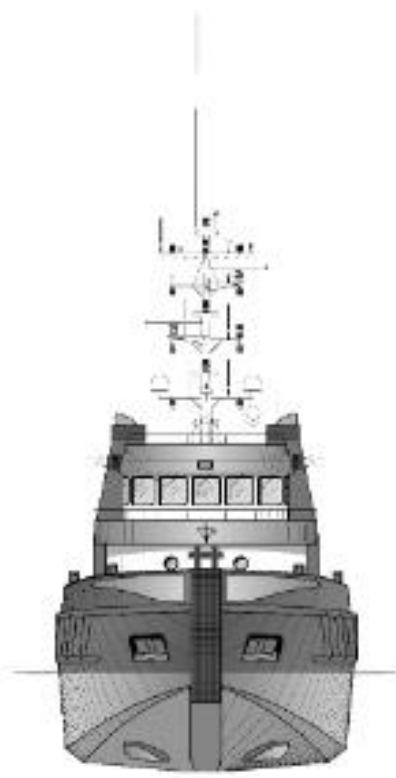
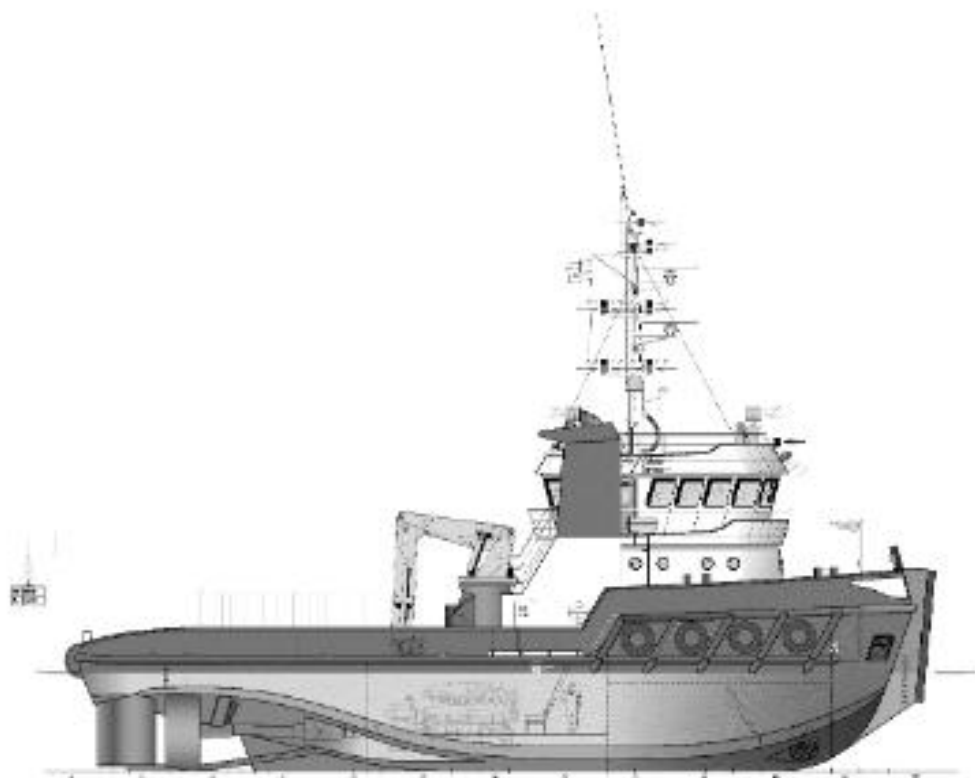
PROPULSION SYSTEM	
Main Engines	2x Mitsubishi S12U MPTK
Total Power	4.456 kW
Gearboxes	ZF Masson type W 20500 1/5 red
Propulsion	2x fixed props in short nozzles
Propellor Diameter	2,40 meter, Van Voorden
Bowthruster	240 kW = 321 BHP, hydraulic driven

AUXILIARY EQUIPMENT	
Generator sets	2x Mitsubishi 6D 16 T
Capacity	2x 140 kVa
Hydraulic set	1x Mitsubishi S6A3 MPTK 600HP
Fresh Water Maker	2000 ltr/24h
Gasoil separator	Westfalia CP1 OTC 3 2.000 ltr/hr

DECK CRANE	
Type	HEILA HLRM 200-4SL
Capacity	9,0 tons at 16,31 meters
Auxiliary marine crane	Not applicable

DECK EQUIPMENT	
Winch	Kraaijeveld Towing and anchorhandling winch
Towing Drum	Pull Force 80T / Holding F. 180T
Anchor Handling Drum	Pull Force 80T / Holding F. 180T
Main Towing Wire	1.000 meters x 58 mm
2nd Towing Wire	600 meters x 56 mm
Anchorhandling Work Wire	100 meters x 44 mm
Tugger Winch	2x 8.500 kN - 40m x 18mm wires
Towing Pins	Kooiman hydraulic Delta pins with combined chain/wire stopper SWL 50/100MT
Pushbow	Double rubber fender 2x 500 mm dia.
Stern Roller	6,0m x dia 1.000mm

ACCOMMODATION	
Persons	7
Single Cabin	3
Double Cabin	2
Air Conditioned	Yes



## KEY SPECIFICATIONS OF OUR TUG FLEET

NAME OF THE VESSEL	LENGTH	BREADTH	DEPTH	CLEAR DECK AREA	CARGO DECK LOAD	BOLLARD	TOTAL POWER
KOOLE 32	31,10 meter	9,50 meter	3,10 meter	108,0 m <sup>2</sup>	15,0 tons per m <sup>2</sup>	50,0 tons	2.340 kW
KOOLE 42	42,00 meter	11,00 meter	4,90 meter	160 + 2x 20 m <sup>2</sup>	5,0 tons per m <sup>2</sup>	45,0 tons	2.238 kW
KOOLE 53	52,80 meter	13,20 meter	5,20 meter	275,0 m <sup>2</sup>	7,0 tons per m <sup>2</sup>	50,0 tons	3.200 kW



# AHTS KOOLE 31

**KMS bv**

Vijfhuizerdijk 110  
2141 BD Vijfhuizen  
The Netherlands  
+31 (0)23 558 19 37  
info@koole.eu  
www.koole.eu