

M.V. KOOLE 74

The KOOLE 74 is an general cargo vessel 73,95 by 10,80 meters. She has a deadweight of 1.404 ton and serves as the preferred way of transporting KMS equipment, various waste and scrap materials and other cargo efficiently to any worksite.

GENERAL	
Name	KOOLE 74
Type of vessel	General Cargo Ship
Class	St. Vincent Class ✘ 100 A5 M E General Cargo ship ✘ MC
Flag	St. Vincent
Port of Registry	Kingstown
Year Built	1969
Callsign	J8RH6
IMO Number	7002605
MMSI	377901292

DIMENSIONS	
Length Overall	73,95 meter
Length Between P.P.	67,99 meter
Breath Overall	10,80 meter
Depth at Sides	5,60 / 3,48 meter
Minimum Draft	2,70 meter
Maximum Draft Laden	3,66 meter
Minimum Airdraft	19,50 meter
Maximum Airdraft	21,50 meter
Deadweight	1.404 tons
Gross Tonnage	1.251 GT
Net Tonnage	484 NT

CARGO CAPACITY	
Cargo Hold Dimensions	41,50 x 8,10 x 6,50 meter (L x B x H)
Cargo Hatch Dimensions	42,58 x 8,43 meter (L x B)
Cargo Capacity	2.200 cbm in hold
DWCC S/W	1.200 tons
Steel Scrap / Cargo Capacity	1.200 tons
Containers	27x 40ft Containers
Cargo Deck Load	18,0 tons per m ² on the Tanktop (18mm) 1,2 tons per m ² on the Hatch Covers
Frame Spacing	550 mm

NAUTICAL AND COMMUNICATION EQUIPMENT	
Sea areas	A1+A2+A3
Radar system	1x Furuno FAR 2127 1x JRC NWZ 173 - JMA -5312-6HS
SSB	NSR NHR-1500 MF/HF
Chart system	1x ECDIS 900
Autopilot	NaviTron NT888G
Inmarsat C	2x Furuno Felcom 18
GPS	NSR GNSS Navigator NGR-3000
AIS	SAAB R4-AIS Shipborne Class A
Gyro Compass	Non/ Sattelite Compas
Navtex	NSR Navtex Receiver NVX-3000
Dopplerlog	Furuno RD-33
V-Sat	Intellean

PERFORMANCES	
Maximum Speed	10 Knots
Cruising speed	9 Knots
Economic Speed	8 Knots

PROPULSION SYSTEM	
Main Engines	VEB Schwermaschinebau "Karl Liebknecht" 8 NVD 48 A-2-U
Total Power	441 kW = 600 BHP
Propulsion	Single FP Propeller + Becker Flaf-Rudder
Propellor Turning	Right propeller
Propellor Diameter	1230 mm
Bowthruster	120 kW Jastram, Driven MWM 8 Cly. Aux eng.

AUXILIARY EQUIPMENT	
Generator sets	2x DEUTZ F6L912 / 1x DEUTZ F3L912
Capacity	2x 80 kVa / 30 kVa
Hydraulic set	HATLAPA Ueterson Holstein
Fresh Water Maker	N/A
Gasoil separator	1x Desmi f.o seperator 2,0m3 p.u

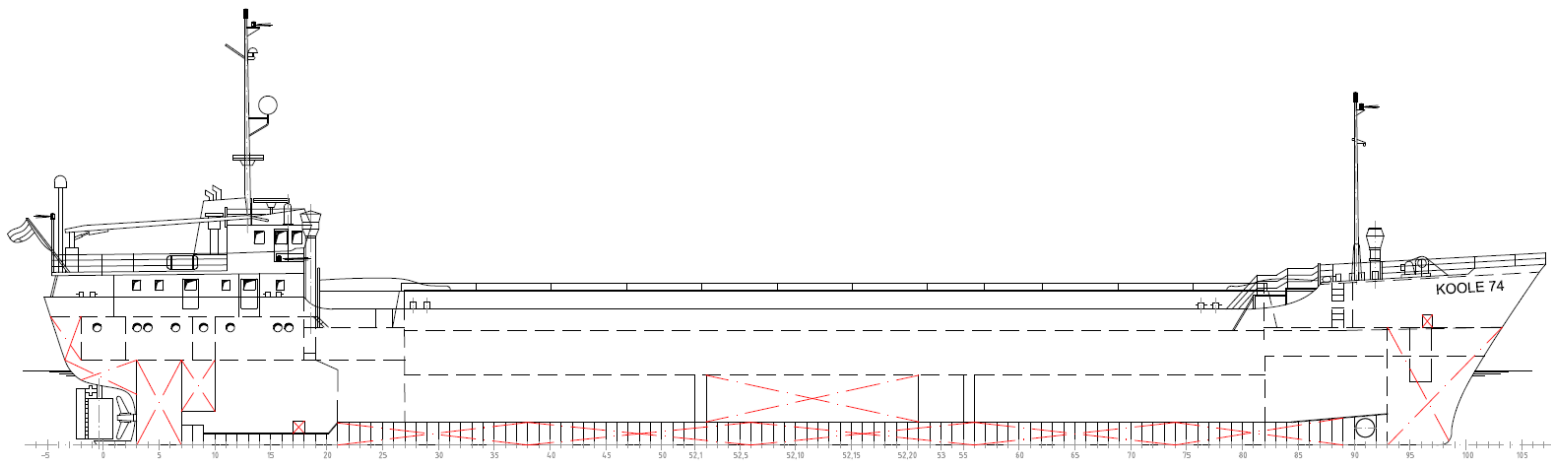
DECK CRANE	
Type Heila	HADEF Liftboy Davit crane for Rescueboat
Capacity	1.000 kg
Auxiliary marine crane	Alpha One OMT1-112M4

TANK CAPACITY	
Fuel Oil	80,0 m ³
Fresh Water	20,0 m ³
Lube Oil	1,5 m ³
Hydraulic Oil	1,0 m ³
Dirty Oil	3,0 m ³
Sewage	2,0 m ³
Fuel Oil Transfer Pump	5,2 m ³ /h
Fresh Water Transfer Pump	15,5 m ³ /h

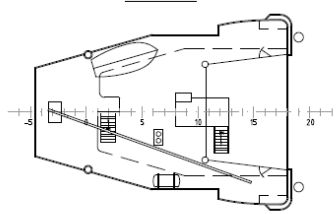
WATER BALLAST	
Water Ballast Capacity	579,67 m ³
Ballast Pump Capacity	

DECK EQUIPMENT	
Forward Mooring Winch	HATLAPA EUTERSEN 120.31 /
Aft Mooring Winch	HATLAPA UETERSEN MA16 3134

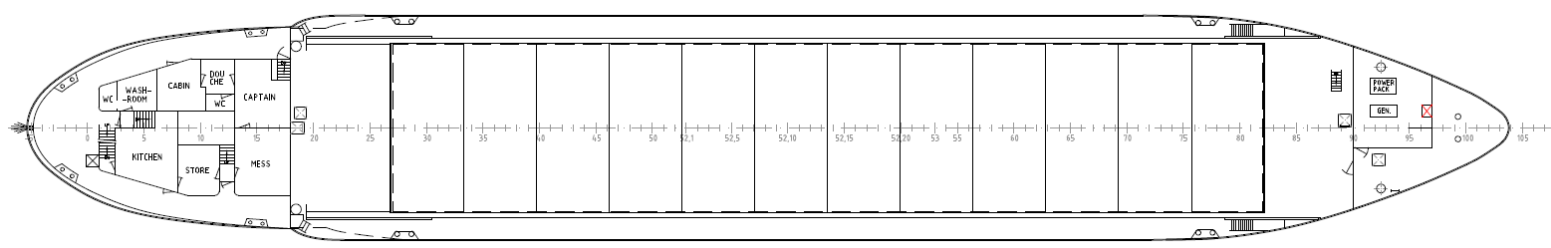
ACCOMMODATION	
Persons	6
Single Cabin	6
Double Cabin	0
Air Conditioned	Yes
Heated	Yes



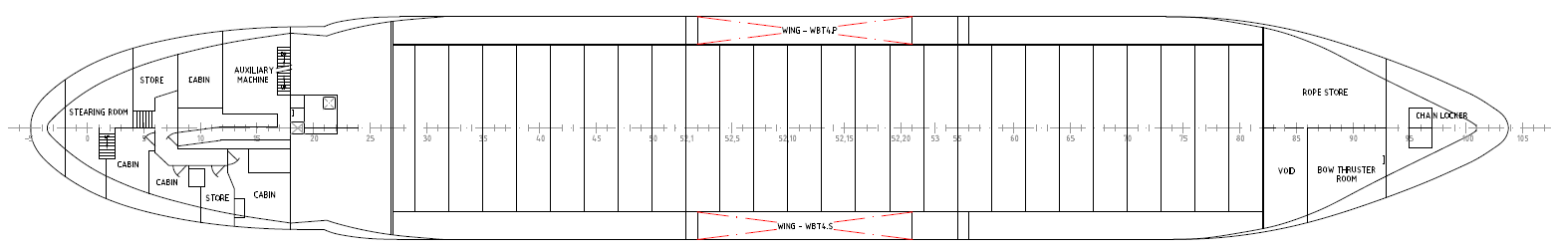
BOOTSDECK



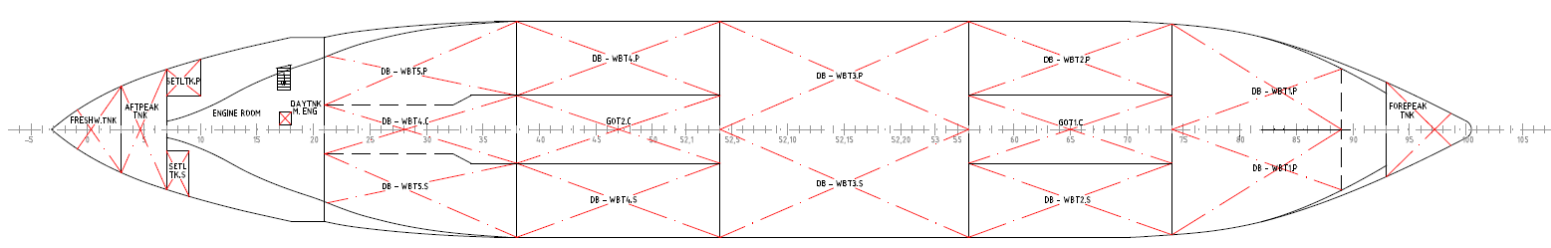
MAIN DECK



TWEEN DECK



TANK TOP



Ballast Water

Compartment	Location (Fr. No)	Capacity [m ³]	Centre of gravity		
			LCG [m]	VCG [m]	TCG [m]
Forepeak	93 - FWD	65,2	64,263	3,774	0,000
DB - WB1.P	74 - 89	38,5	55,988	0,581	-2,039
DB - WB1.S	74 - 89	34,9	55,988	0,581	2,039
DB - WB2.P	56 - 74	34,6	47,230	0,590	-3,311
DB - WB2.S	56 - 74	34,6	47,230	0,590	3,311
DB - WB3.P	52.4 - 56	36,319	0,577	-2,451	
WING - WB3.P	52.2 - 52.21	97,5	34,380	2,108	-4,743
DB - WB3.S	52.4 - 56	36,319	0,577	2,451	
WING - WB3.S	52.2 - 52.21	97,5	34,380	2,108	4,743
DB - WB4.P	38 - 52.4	35,2	25,319	0,594	-3,272
DB - WB4.S	38 - 52.4	35,2	25,319	0,594	3,272
DB - WB5.P	21 - 38	30	16,060	0,607	-2,863
DB - WB4.C	21 - 38	25,5	16,033	0,55	0,000
DB - WB5.S	21 - 38	30	16,060	0,607	2,863
Aftpeak	3 - 7	20,97	2,328	3,012	0,000

Fuel Oil

Compartment	Location (Fr. No)	Capacity [m ³]	Centre of gravity		
			LCG [m]	VCG [m]	TCG [m]
GOT1.C	56 - 74	36,3	47,300	0,550	0,000
GOT2.C	38 - 52.4	36,3	25,300	0,550	0,000
Settling Tank.P	7 - 10	3,25	4,205	3,403	-2,469
Settling Tank.S	7 - 9	3,5	3,880	3,289	2,060
Daytank Main Engine	17 - 18	1	9,075	0,950	0,875
Daytank Emergency Generator	96 - 97	0,52	64,625	5,925	1,450

Fresh Water

Compartment	Location (Fr. No)	Capacity [m ³]	Centre of gravity		
			LCG [m]	VCG [m]	TCG [m]
Fresh Water Tank	AFT - 3	12,3	0,669	4,405	0,000

M.V. KOOLE 74

KMS BV
Vijfhuizerdijk 110
2141 BD Vijfhuizen
The Netherlands
+31 (0) 23 558 19 37
info@koole.eu
www.koole.eu