

# AHTS NORNE

The Norne is an anchor handling tug supply vessel (AHTS). With its excellent seakeeping behavior and her maneuverability the Norne has outstanding towing characteristics. The Norne has a bollard pull of 83 tonnes, classed by Bureau Veritas with an unrestricted sailing area and Mon-Schaft Ice Class 1C notation. The Norne is manned with an experienced crew, equipped with high quality gear. With its multi-purpose design and outstanding towing characteristics, the Norne can be used for worldwide operations such as, but not limited to, single and double towing, pushing, anchor handling, anchor recovery, rig move assistance, salvage assistance, wreck removal, harbor towage, escorting and deck and/or cargo transportation. The Norne is equipped with a towing- and anchor handling winch, deck crane and Karmoy towing pins. Accommodation on board is provided for 8 persons.

**GENERAL**

Name	NORNE (KOOLE 34)
Type of vessel	Anchor Handling Tug Supply / Utility Vessel
Class	Bureau Veritas • Hull • Mach • AUT-UMS/Tug Mon-Shaft Ice Class 1C / Unrestr. Nav.
Flag	Dutch
Port of Registry	Delfzijl
Year Built	2011 - Kooiman Zwijndrecht, The Netherlands
Callsign	PCJR
IMO Number	9612806
MMSI	245460000

**DIMENSIONS**

Length Overall	34,10 meter
Breath Overall	11,50 meter
Depth at Sides	4,20 meter
Minimum Draft	3,90 meter
Operating Draft	4,20 meter
Maximum Draft	4,25 meter
Minimum Airdraft	9,65 meter
Maximum Airdraft	28,50 meter
Gross Tonnage	422 GT
Net Tonnage	126 NT
Clear deck area	103,0 m <sup>2</sup>
Cargo capacity	3x 1 TEU or 2x 1 FEU
Cargo deck load	6,0 tons per m <sup>2</sup>

**TANK CAPACITY**

Fuel Oil	304,10 m <sup>3</sup>
Fresh Water	19,80 m <sup>3</sup>
FiFi foam tanks	N/A
Lube Oil	4,80 m <sup>3</sup>
Hydraulic Oil	2,00 m <sup>3</sup>
Dirty Oil	4,80 m <sup>3</sup>
Sewage	15,90 m <sup>3</sup>
Fuel Oil Transfer Pump	50 m <sup>3</sup> /h
Fresh Water Transfer Pump	50 m <sup>3</sup> /h

**NAUTICAL AND COMMUNICATION EQUIPMENT**

Sea areas	A1+A2+A3
Radar system	2x Furuno 2117 with Arpa
SSB	Furuno FS 2570 250 watt pep
Chart system	ECDIS Transas Navisallor 2x Furuno type FEA
Autopilot	RZ Seapilot 75
Inmarsat C	2x Furuno Falcon 15
Echo sounder	Furuno FE 700
GPS	2x Furuno GP 150 with SSAS facility
AIS	Furuno FA 150
Gyro Compass	Raytheon STD 22
Navtex	Furuno NX 700 + 701
Dopplerlog	Furuno DS 80
V-Sat	Yes

**PREFORMANCES**

Bollard Pull	83,1 tons
Maximum Speed	13,50 knots
Economic Speed	10,00 knots

**PROPULSION SYSTEM**

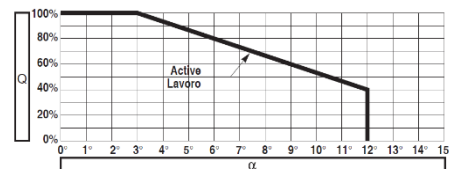
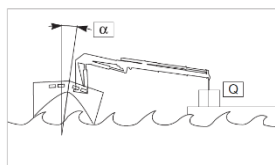
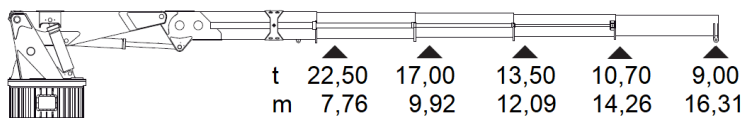
Main Engines	2x Mitsubishi type S12 U MPTK
Total Power	4.476 kW = 6.098 BHP
Gearboxes	ZF Masson type W 20500 1/5 red
Propulsion	2x fixed props in short nozzles
Propellor Diameter	2,80 meter, Van Voorden
Bowthruster	590 BHP, hydraulic driven

**AUXILIARY EQUIPMENT**

Generator sets	2x Mitsubishi 6D 16 T
Capacity	2x 140 KVA
Hydraulic set	1x Mitsubishi type S6R MPTK 605 kW
Fresh Water Maker	3.500 ltr/24h
Gasoil separator	2x Alfa laval 5.000 ltr/24 hr

**DECK CRANE**

Type Heila	HEILA HLRM 200-4SL
Capacity	9,0 tons at 16,31 meters
Auxiliary marine crane	Not applicable

**DECK EQUIPMENT**

Winch	Kraaijeveld Towing and anchorhandling winch
Towing Drum	Pull Force 80T / Holding F. 180T
Anchor Handling Drum	Pull Force 80T / Holding F. 180T
Main Towing Wire	1.000 meters x 58 mm
2nd Towing Wire	500 meters x 58 mm
Anchorhandling Work Wire	100 meters x 44 mm
Tugger Winch	Kraaijeveld 12 tons Pull - 24mm wire
Towing Pins	Karmoy fork and Towingpins SWL 130 t
Pushbow	Single rubber fender 1x 1050mm dia.
Stern Roller	6,0m x dia 1.200mm
Firefighting monitors	Not applicable

**ACCOMMODATION**

Persons	8
Single Cabin	2
Double Cabin	4
Air Conditioned	Yes



# AHTS NORNE

KMS BV  
Vijfhuizerdijk 110  
2141 BD Vijfhuizen  
The Netherlands  
+31 (0) 23 558 19 37  
info@koole.eu  
www.koole.eu