



AHTS KOOLE 31

The KOOLE 31 (former Viking) is an anchor handling tug supply vessel (AHTS). With its excellent seakeeping behavior and her maneuverability the KOOLE 31 has outstanding towing characteristics. The KOOLE 31 has a bollard pull of 72,3 tonnes and classed by Bureau Veritas with an unrestricted sailing area. The KOOLE 31 is manned with an experienced crew, equipped with high quality gear. With its multi-purpose design and outstanding towing characteristics, the KOOLE 31 can be used for worldwide operations such as, but not limited to, single and double towing, pushing, anchor handling, anchor recovery, rig move assistance, salvage assistance, wreck removal, harbor towage, escorting and deck and/or cargo transportation. The KOOLE 31 is equipped with a towing- and anchor handling winch, deck crane and Karmoy towing pins. Accommodation on board is provided for 8 persons.

GENERAL	
Name	KOOLE 31
Type of vessel	Anchor Handling Tug Supply / Utility Vessel
Class	Bureau Veritas I  HULL  MACH AUT-UMS Tug - Mon-shaft, Unrestr. Nav.
Flag	Dutch
Port of Registry	Amsterdam
Year Built	2008 - Kooiman Zwijndrecht, The Netherlands
Callsign	PIHD
IMO Number	9431903
MMSI	245039000

DIMENSIONS	
Length Overall	30,80 meter
Breath Overall	11,00 meter
Depth at Sides	4,20 meter
Minimum Draft	3,45 meter
Operating Draft	3,45 meter
Maximum Draft	3,65 meter
Minimum Airdraft	11,25 meter
Maximum Airdraft	22,80 meter
Gross Tonnage	332 GT
Net Tonnage	99 NT
Clear deck area	96,0 m²
Cargo capacity	3x 1 TEU or 2x 2 TEU
Cargo deck load	6,0 tons per m²

TANK CAPACITY	
Fuel Oil	220,00 m³
Fresh Water	16,00 m³
FiFi foam tanks	N/A
Lube Oil	3,20 m³
Hydraulic Oil	5,00 m³
Dirty Oil	1,00 m³
Sewage	10,00 m³
Fuel Oil Transfer Pump	50 m³/h
Fresh Water Transfer Pump	50 m³/h

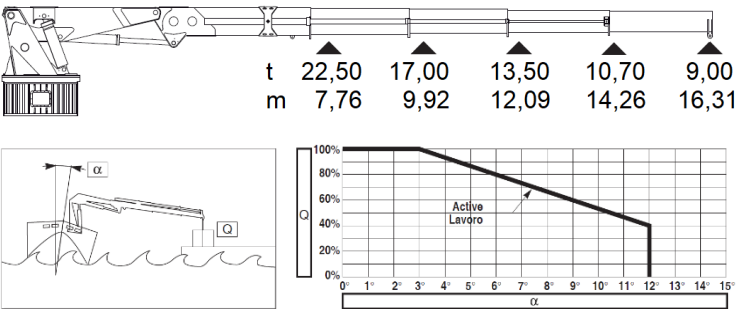
NAUTICAL AND COMMUNICATION EQUIPMENT	
Sea areas	A1+A2+A3
Radar system	2 x Furuno 2117 with Arpa
SSB	Furuno FS 2570 250 watt pep
Chart system	ECDIS Transas Navisallor 2x Furuno type FEA
Autopilot	RZ Seapilot 75
Inmarsat C	2x Furuno Falcon 15
Echo sounder	Furuno FE 700
GPS	2 x Furuno GP 150
AIS	Furuno FA 150
Gyro Compass	Tokimec ES 150
Navtex	Furuno NX 700 + 701
Dopplerlog	Furuno DS 80
V-Sat	Yes

PERFORMANCES	
Bollard Pull	72,3 tons
Maximum Speed	13,5 knots
Economic Speed	9,00 knots

PROPULSION SYSTEM	
Main Engines	2x Mitsubishi S12U MPTK
Total Power	4.476 kW = 6.100 BHP
Gearboxes	ZF Masson type W 20500 1/5 red
Propulsion	2x fixed props in short nozzles
Propellor Diameter	2,40 meter, Van Voorden
Bowthruster	240 kW = 321 BHP, hydraulic driven

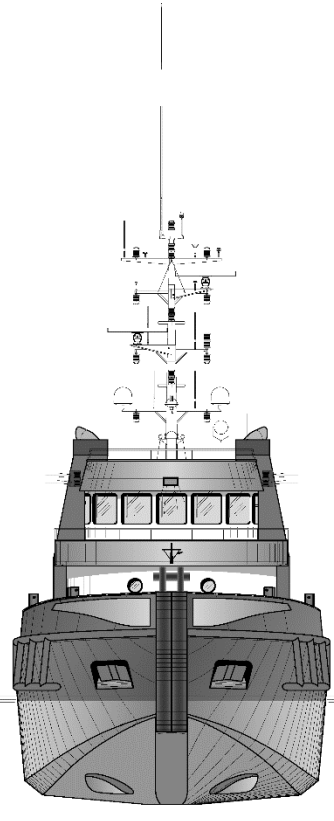
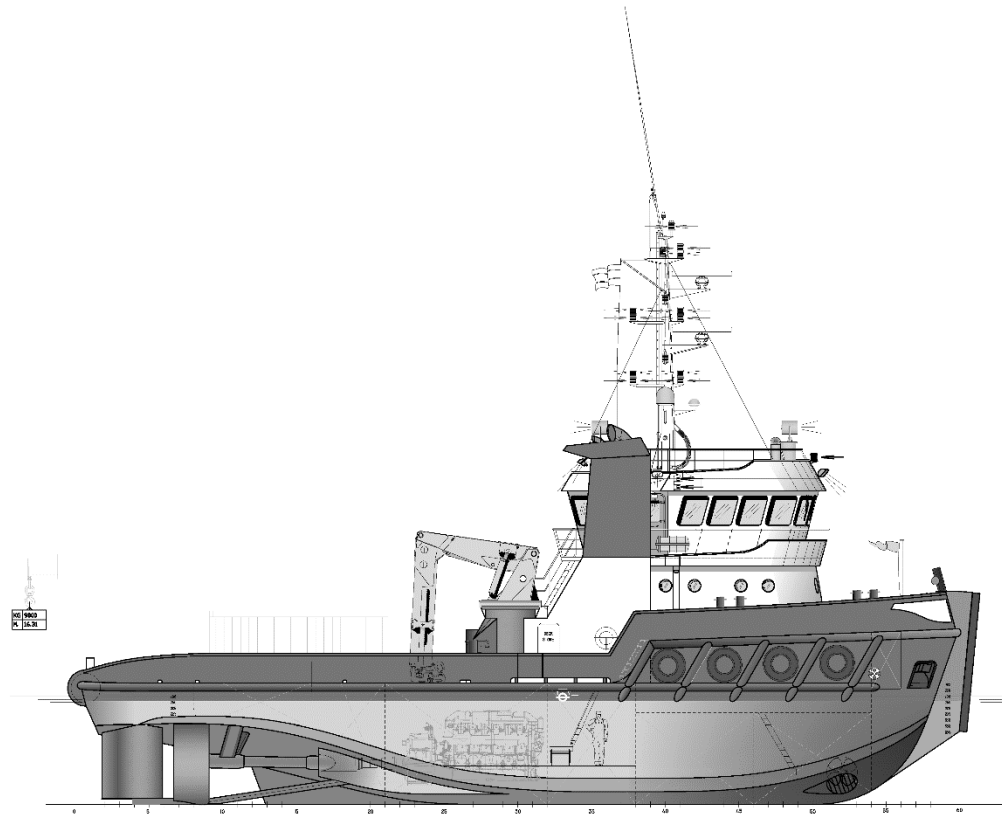
AUXILIARY EQUIPMENT	
Generator sets	2x Mitsubishi 6D 16 T
Capacity	2x 140 kVa
Hydraulic set	1x Mitsubishi S6A3 MPTK 600HP
Fresh Water Maker	2000 ltr/24h
Gasoil separator	Westfalia CP1 OTC 3 2.000 ltr/hr

DECK CRANE	
Type Heila	HEILA HLRM 200-4SL
Capacity	9,0 tons at 16,31 meters
Auxiliary marine crane	Not applicable



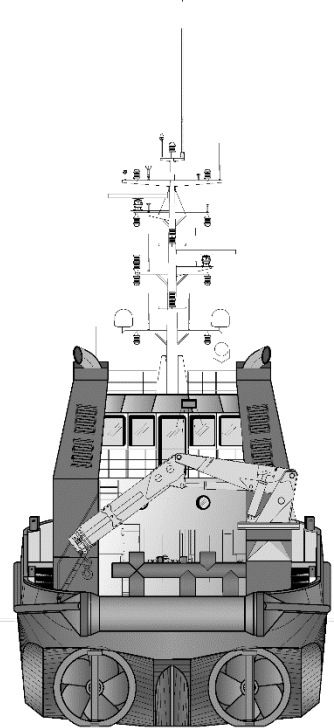
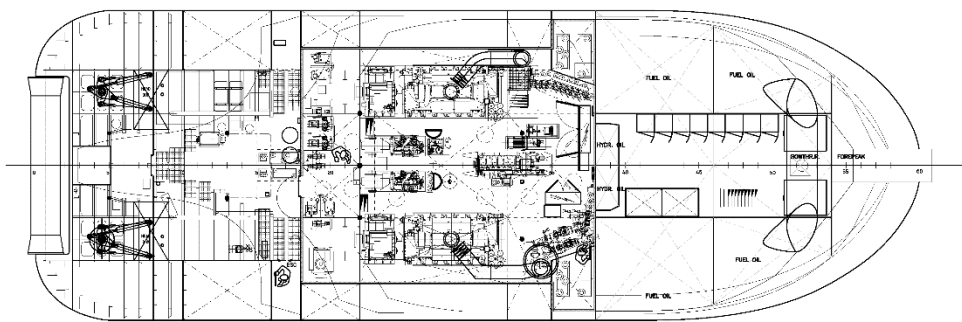
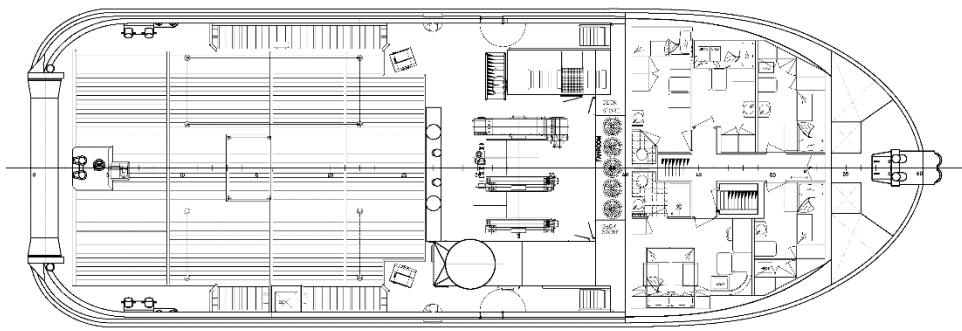
DECK EQUIPMENT	
Winch	Kraaijeveld Towing and anchorhandling winch
Towing Drum	Pull Force 80T / Holding F. 180T
Anchor Handling Drum	Pull Force 80T / Holding F. 180T
Main Towing Wire	1.000 meters x 58 mm
2nd Towing Wire	700 meters x 58 mm
Anchorhandling Work Wire	100 meters x 44 mm
Tugger Winch	2x 8.500 kN - 40m x 18mm wires
Towing Pins	WK Hydraulics towing pins with chain/wire catcher/stopper
Pushbow	Double rubber fender 2x 500 mm dia.
Stern Roller	6,0m x dia 1.000mm

ACCOMMODATION	
Persons	7
Single Cabin	3
Double Cabin	2
Air Conditioned	Yes



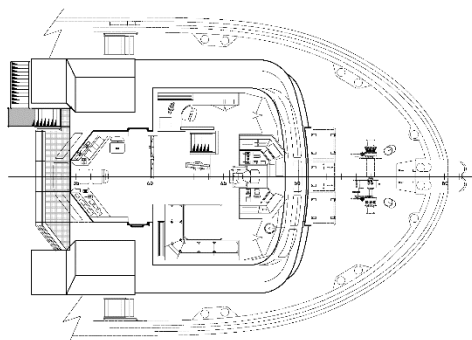
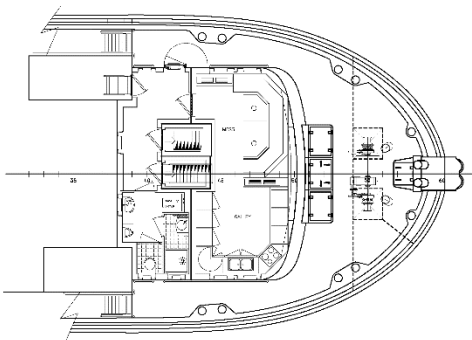
MAIN DECK/TWEEN DECK

FORECASTLE DECK



FORECASTLE DECK

BRIDGE DECK



AHTS KOOLE 31

KMS BV
Vijfhuizerdijk 110
2141 BD Vijfhuizen
The Netherlands
+31 (0) 23 558 19 37
info@koole.eu
www.koole.eu