



# 200 tons Crane and Barge K10030

*Multipurpose lifting solution*



# 200 tons Crane and Barge K10030

## Multipurpose lifting solution

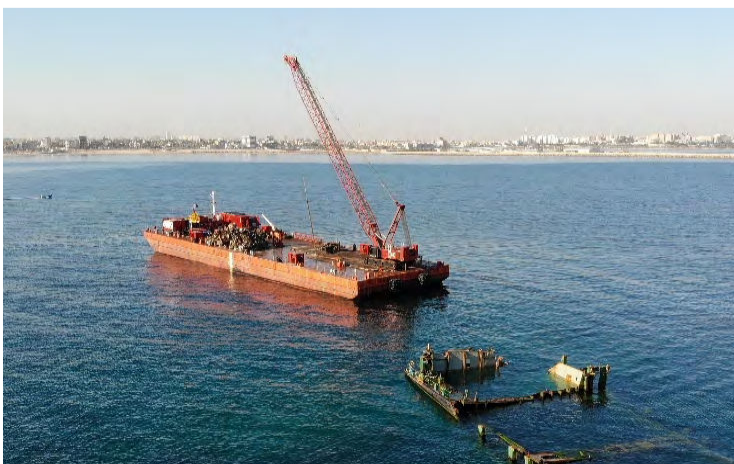
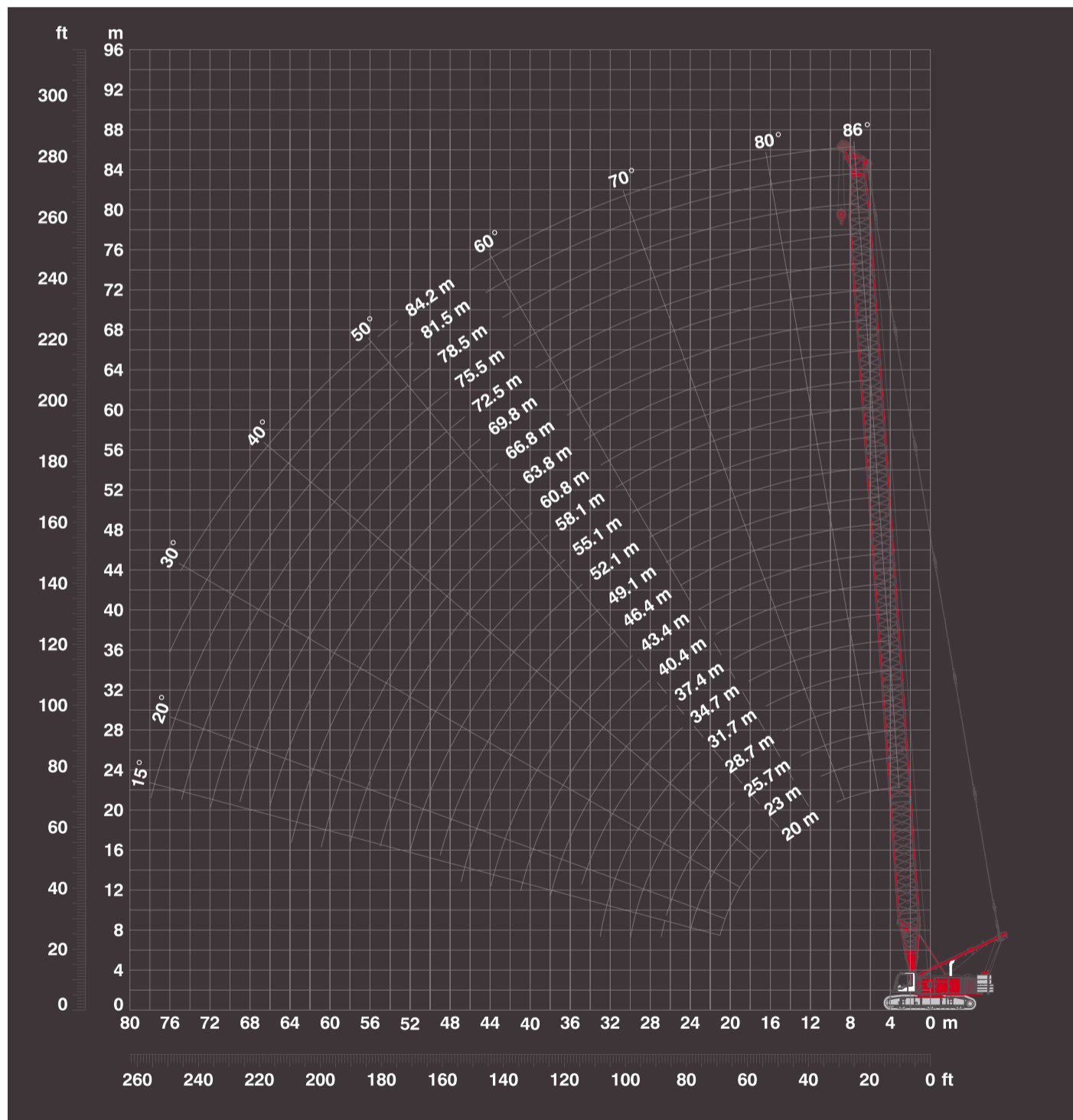
- Barge fitted for ballasting, equipped with 2x 1000m<sup>3</sup>/hr ballastpumps D2 (incl treatment plant).
- 4 point mooring system
- 4 winches of each 60t
- 7t delta flipper anchors
- 12 persons accommodation + mess room, change room, sanitary and offices
- Fuel storage on board + 3x generator 230/400v

### BARGE K10030

- Length overall: 100.584 [m] (330'0"-)
- Breadth: 30.480 [m] (100'0"-)
- Depth: 6.100 [m] (20'0"-)
- Draft: 0.950 – 1.210 [m]
- Frame spacing: 1.830 [m] (6'0"-)
- Dwt: 10112.5 [t]

### LIEBHERR HS 8200 HD

- Crawler crane
- Maximum lifting capacity: 200t
- Minimum boom length: 20.00 m
- Maximum boom length: 84.20 m



# 200 tons Crane and Barge K10030

*Multipurpose lifting solution*

**KOOLE bv**

Vijfhuizerdijk 110  
2141 BD Vijfhuizen  
The Netherlands  
+31 (0) 23 558 19 37

[info@koole.eu](mailto:info@koole.eu)  
[www.koole.eu](http://www.koole.eu)

**KOOLE nv**

Vaartkaai 51  
2170 Antwerpen  
België  
+32 (0) 3 475 07 83

[info@koole.be](mailto:info@koole.be)  
[www.koole.eu](http://www.koole.eu)