



**K-4512**

**Heavy Duty Deck Cargo Pontoon**



# K-4512

## Heavy Duty Deck Cargo Pontoon

### SPECIFICATIONS

Length mld.	45,00 m
Beam mld	12,00 m
Depth mld	2,50 m
Draught max.	1,87 m
Deadweight max. (incl. cargo bin)	655 T
Deck load	12 T /m <sup>2</sup>
Flag	St. Vincent and the Grenadines
Port of Registry	Kingstown

### Classification

The hull construction meets the classification rules of Bureau Veritas for non-propelled and unmanned vessels with the following notation:

Class I X Hull  
 Pontoon / Special service - Fuel Oil Barge  
 Flash point > 60 degrees  
 Coastal area's (max. 20 NM offshore)  
 Strength bottom

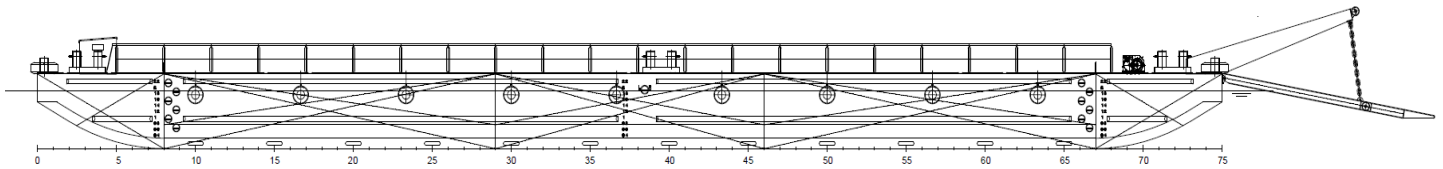
### Additional specification

- Ro-Ro Ramp
- Fuel Oil Barge

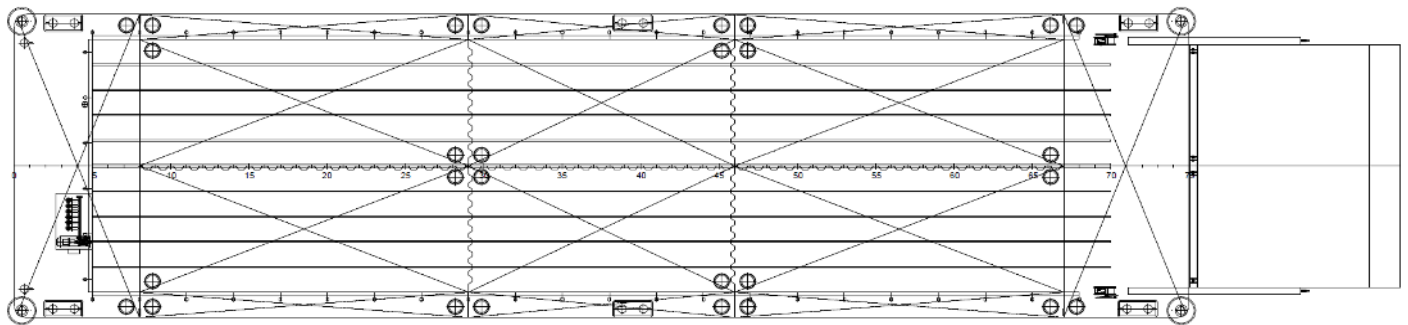
### Lay-out

The Damen Stan Pontoon is a heavy constructed modern non-propelled Pontoon for deck cargo built to standard design. The Damen Stan Pontoon is provided with a bow ramp and can be used for various operations on inland waters, in harbours, estuaries and coastal waters. The Pontoon is designed for the transport of general cargo on deck. Also 6 cargo tanks with discharge pump / filling station is provided for the transport of MDO. The construction of the Pontoon is based on a longitudinal framing system in combination with a transverse web frame system. Due to the utilisation of the Pontoon, a special strong construction with extra local strengthening in bottom fore and aft ship, deck and sheer strake and a heavy welding system are used. The hull is divided into watertight compartments according to the General Arrangement Plan.

SIDE VIEW

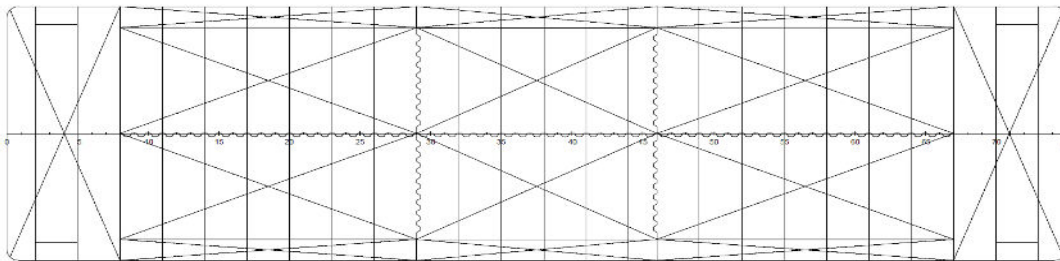


TOP VIEW



VIEW BELOW MAIN DECK

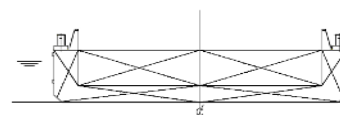
**Damen**  
**Stan Pontoon® 4512**




FRONT VIEW




AFT VIEW



CROSS SECTION



<b>Main dimensions (approx.)</b>	
Length mld	45,00 m
Breadth mld	12,00 m
Depth mld	2,50 m
Draught max.	1,87 m
Deadweight max. (incl. cargo bin)	655 ton
Cargo tank capacity (97%)	545 m <sup>3</sup>
Cargo bin volume	375 m <sup>3</sup>
Uniform load on cargo deck	12 ton/m <sup>2</sup>

 DAMEN SHIPYARDS GORINCHEM Industriestraat Rindiger Meer 20 P.O. Box 1 3320 AA Gorinchem phone: +31 (0) 183 43 00 11 info@damen.nl KDC 961 Gorinchem GORINCHEM, The Netherlands fax: +31 (0) 183 43 00 80 www.damen.nl		<b>General Arrangement</b>	
Scale	1:100		
Units	mm		
Drawn	P&B		
Checked	H.V.L.	Standard Type	Stan Pontoon® 4512
Approved	S.C.No.	Project Ship/Type	- Plan - Sheet   Date
	Drawing ID	Stock 1	SPo 4512 - Mk1-GA 001   2016.06.22
IFS Doc No: 1877332 COPYRIGHT DAMEN SHIPYARDS GORINCHEM			

# K-4512

## Heavy Duty Deck Cargo Pontoon

KOOLE bv

Vijfhuizerdijk 110  
2141 BD Vijfhuizen  
The Netherlands  
+31 (0) 23 558 19 37

[info@koole.eu](mailto:info@koole.eu)  
[www.koole.eu](http://www.koole.eu)

KOOLE nv

Vaartkaai 51  
2170 Antwerp  
Belgium  
+32 (0) 3 475 07 83

[info@koole.be](mailto:info@koole.be)  
[www.koole.be](http://www.koole.be)